



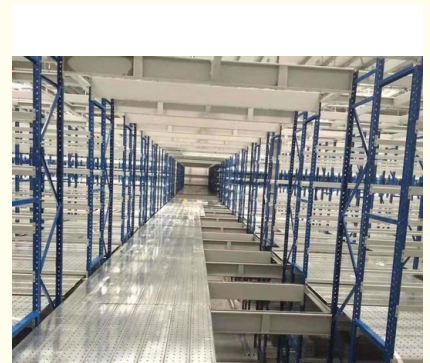
Multi-Layer Steel Mezzanine Floor Rack For Warehouse Storage

Basic Information

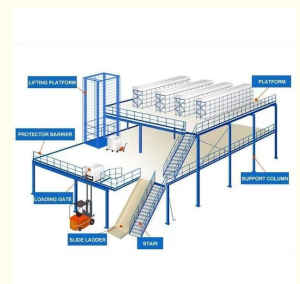
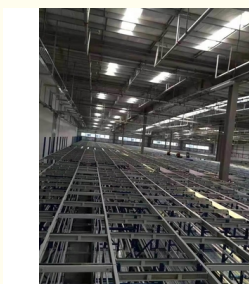


Product Specification

- Model NO.: Mezzanine Flooring Racking
- Material: Steel
- Structure: Layer Frame
- Type: Multi-Level Racking
- Mobility: Fixed
- Height: 5-15m
- Weight: 500-1500
- Closed: Open
- Development: Conventional
- Serviceability: Common Use
- Color: Customized
- Lead Time: 25 Days
- Raw Material: Q235
- Surface Treatment: Powder Coating
- Transport Package: Standard Export



More Images



Our Product Introduction

for more products please visit us on warehouse-rackings.com

Product Description

Product Description

Jiangsu Qifei Intelligent Storage Equipment Co., Ltd.



QiFei Mezzanine floor: Mezzanine rack takes medium-duty or heavy-duty rack as the main part, to use solid steel plate or solid steel checkered plate or perforated plate as the flooring. The height can be up to 5 meters to 9 meters. Stairs, lift platform, hoist, conveyor belt or forklift are used to take goods upstairs.

Features&Benefits

Structural design is flexible, with superior strength and stability, generally, the load capacity of multi-tier mezzanine is 300kg-1,000kg/sqm..

Biggest feature is fully assembled structure (no on-site welding required). Use shelves as floor supports to expand the space to obtain maximum inventory capacity when the area is limited.

Generally shelving to be designed as 2-3 floors, with staircase, handrail, safety barrier, goods slide, goods elevator and lifting platform can be configured.

Suitable for high warehouse, light goods, manual access, many varieties of goods, and high quantity of good

Length	Adjustable
Width	Adjustable
Height	Adjustable
Material	Q235B
OEM&ODM	Available
Surface Treatment	Galvanized/Powder Coating
Color	Customized



LARGE LOAD CAPACITY



COMBINED FREELY

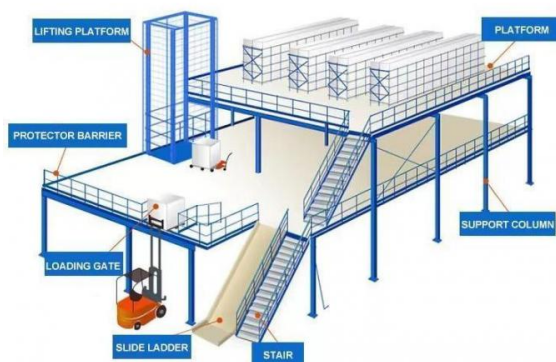


HIGH SPACE UTILIZATION



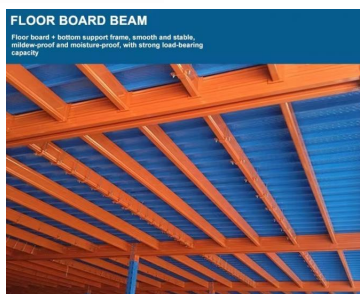
CONVENIENT INSTALLATION

Detailed Photos



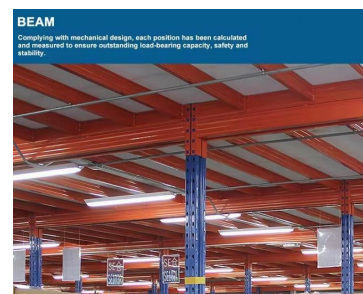
STAIRS AND HYDRAULIC LIFTING PLATFORMS

The lifting platform is used to transport goods up and down between floors, with a large practical carrying capacity. Smooth lifting and lowering, reducing manual handling, and slides can be configured according to needs.



FLOOR BOARD BEAM

Floor board + bottom support frame, smooth and stable, mildew-proof and moisture-proof, with strong load-bearing capacity.



BEAM

Complying with mechanical design, each position has been calculated and measured to ensure outstanding load-bearing capacity, safety and stability.

MEZZANINE PANELS

Cold rolled steel is strong and stable, with a textured surface. The surface is textured, which increases the friction and prevents slipping and falling. The steel is impact-resistant, load-bearing and protected against corrosion in accordance with international standards.



COLUMN

The cross beams on both sides are hung on the columns and fixed with safety pins for a higher safety factor.



Choose the wood plywood, lacquering board, mesh board with punched holes, galvanized board (more details, please consult customer service)



Packaging & Shipping



Package for Upright Frame



Package for Beam



Loading for Beam



Loading for Upright Frame



Loading for Wire Mesh Cage

Company Profile

Jiangsu Qifei Intelligent Storage Equipment Co., Ltd., established in 2020, is one of the leading manufacturer which specialized in designing & manufacturing industrial warehouse storage racks, automation warehouse system and professional logistics equipment, we aim to provide cost-effective and space utilization storage solutions for all customers worldwide .

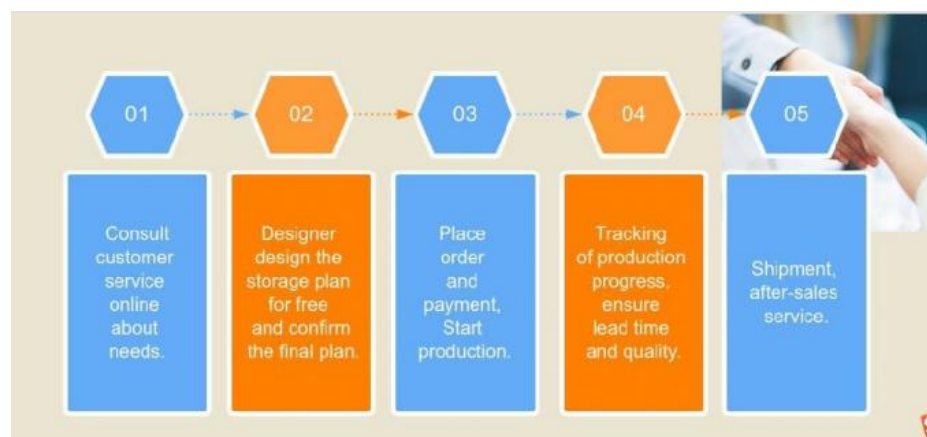
We have powerful R&D teams, including 8 experienced design engineers. Qifei's workshop equipped with 6 automatic production lines of rolling and curved steel and two static powder coating lines, which ensures the high quality of our products. All our products and operation are ISO:9001 certified, and all our racks / shelving are approved by SGS company. Our main products are heavy duty rack, medium duty rack, light duty rack, cantilever rack, mezzanine floor, drive in rack, and so on. Welcome to visit our company.



Success Case



Co-operation Process



Required information for quote

1, The AUTOCAD drawing or draft drawing of warehouse or racking.

- 2, Length, Height, and Width of the warehouse.
- 3, Layers of the racking
- 4, Pallet size.
- 5, Max weight of pallet with cargo on.
- 6, Color requirement.

FAQ

Q: Are you manufacturer or trading company?

A: We are experienced manufacturer in the warehouse storage industry.

Q: How is your delivery time?

A: Generally, it is within 20 days against formal order and deposit. It also depends on other factors such as order quantity.

Q: What is the payment term?

A: T/T 30% as deposit, and 70% before delivery. We'll show you the photos of the products and packages before you pay the balance.

Q: What is your terms of delivery?

A: EXW, FOB

Q: Are samples available?

A: Yes, We can supply the sample if we have ready parts in stock, but the customers have to pay the sample cost and the courier cost.

Q: What is the minimum order quantity?

A: Generally, MOQ is 10sets.

Q: Can I make my own brand and designed products?

A: Yes, we do both OEM and ODM, so you can make your own product with your own logo.

Q: Where is your factory? Can I visit it?

A: Our factory located in Nanjing, Welcome to visit our factory. We can arrange pick-up from the airport or train station for you.

Q: What is the material being used for your products?

A: Mild steel Q235.

Q: I don't have drawing or picture available for the products, could you design it for me?

A: Yes, we can make the best suitable design for you but need to know more details.

Q: How do you make our business long-term and good relationship?

A: Quality makes trust and reputation, plus competitive price to ensure our customers benefit



Jiangsu Qifei Intelligent Storage Equipment Co., Ltd.



+86-15161451461



sharonyan@qifeirack.com



warehouse-rackings.com

Add: #739 Dixiu Road Jiangning District Nanjing China