



## Heavy Duty Mesh Stillage With 1000kg Load Capacity And Powder Coating

Our Product Introduction

for more products please visit us on [warehouse-rackings.com](http://warehouse-rackings.com)

### Basic Information



### Product Specification

- Model NO.: QF-Turnover Box
- Material: Steel
- Structure: Foldable
- Type: Cage
- Mobility: Mobile
- Height: 0-5m
- Weight: 100-1500
- Closed: Semi-closed
- Development: Conventional
- Serviceability: Common Use
- Color: Customized
- Lead Time: 20 Days
- Raw Material: Mild Steel
- Surface Treatment: Powder Coating/Galvanized
- Transport Package: Standard Export Packing



### More Images



## Product Description

### Product Description

This **Steel Container** is the ideal storage solution for transport and storage of all parts. Its design allows items or large dimensions to be stored and retrieved without hassles. This makes for efficient space saving as the floor space taken up is comparatively small. Each unit can load max 1000kg and stack 5 units high when fully loaded. The size and design can be customized to suit for your requirements.



|                  |  |
|------------------|--|
| Name             | Half Open Turnover Box Parts Transport Steel Container |
| Dimensions       | 1000*1000*800mm /Customized                            |
| Material         | Q235 steel   |
| Loading capacity | 1000kg   |
| MOQ              | 50 units   |

### Advantages:

Goods can be stacked on, max 5 levels  
The structure is easy to stack with each other and can be used like shelf





It saves space when unused

Ready to use, no installation required  
Quickly and simply rearrange your warehouse



Easy to lift up and move around with forklift truck  
or pallet jack

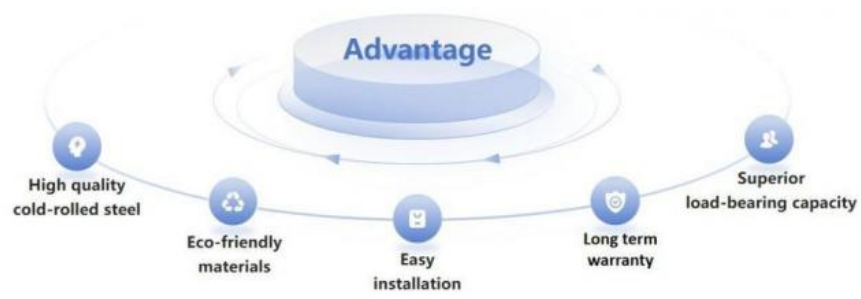
[Styles Show](#)



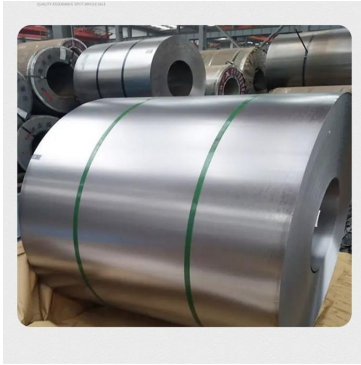


### Display of Usage





### Q235



### Customized Design



### Save Space



### Large Capacity & Perfect Detail



#### Company Profile

**Welcome to visit our company**

### Jiangsu Qifei Intelligent Storage Equipment Co., Ltd



Established in 2020, is one of the leading manufacturer specialized in industrial warehouse storage equipment



Main products are heavy/medium/light duty rack, cantilever rack, mezzanine floor, drive in rack, and so on.



We aim to provide cost-effective and space utilization storage solutions for all customers worldwide





## WHY CHOOSE US



Customization

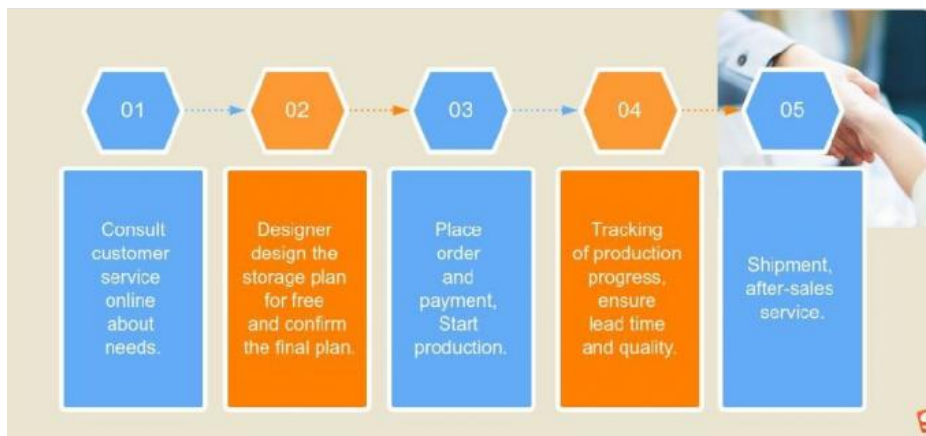


Free Design



Best Price

## Co-operation Process



## FAQ

Q: Are you manufacturer or trading company?

A: We are experienced manufacturer in the warehouse storage industry.

Q: How is your delivery time?

A: Generally, it is within 20 days against formal order and deposit. It also depends on other factors such as order quantity.

Q: What is the payment term?

A: T/T 30% as deposit, and 70% before delivery. We'll show you the photos of the products and packages before you pay the balance.

Q: What is your terms of delivery?

A: EXW, FOB

Q: Are samples available?

A: Yes, We can supply the sample if we have ready parts in stock, but the customers have to pay the sample cost and the courier cost.

Q: What is the minimum order quantity?

A: Generally, MOQ is 10sets.

Q: Can I make my own brand and designed products?

A: Yes, we do both OEM and ODM, so you can make your own product with your own logo.

Q: Where is your factory? Can I visit it?

A: Our factory located in Nanjing, Welcome to visit our factory. We can arrange pick-up from the airport or train station for you.

Q: What is the material being used for your products?

A: Mild steel Q235.

Q: I don't have drawing or picture available for the products, could you design it for me?

A: Yes, we can make the best suitable design for you but need to know more details.

Q: Do I get any guarantee from your company?

A: 3 years warranty

Q: How do you make our business long-term and good relationship?

A: Quality makes trust and reputation, plus competitive price to ensure our customers benefit ;



**Jiangsu Qifei Intelligent Storage Equipment Co., Ltd.**



+86-15161451461



sharonyan@qifeirack.com



warehouse-rackings.com

Add: #739 Dixiu Road Jiangning District Nanjing China