



## Q235 Raw Material Adjustable Mobility Multi-Tier Selective Pallets Racking System

### Basic Information

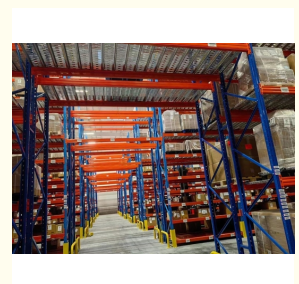
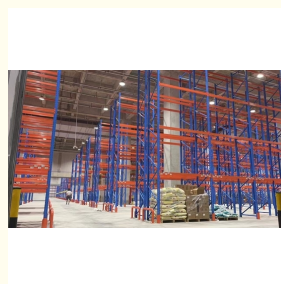
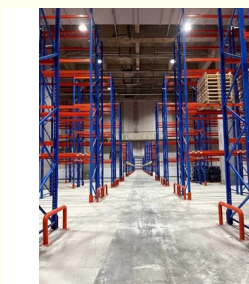


### Product Specification

- Model NO.: QF-Heavy Duty Pallet Racking
- Material: Steel
- Structure: Rack
- Type: Pallet Racking
- Mobility: Adjustable
- Height: >15m
- Weight: 2000
- Closed: Open
- Development: New Type
- Serviceability: Common Use
- Color: Customized
- Lead Time: 25 Days
- Raw Material: Q235
- Surface Treatment: Powder Coating
- Transport Package: Standard Export



### More Images



Our Product Introduction

for more products please visit us on [warehouse-rackings.com](http://warehouse-rackings.com)

## Product Description

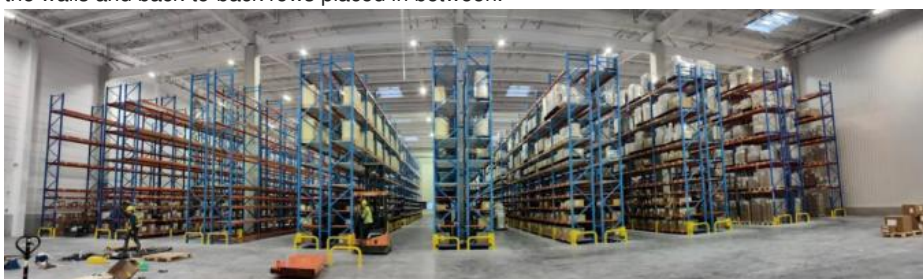


### Source Manufacturer & Free Customized Design & One Stop Service

#### Product Description

**Pallet rack** is mainly used together with pallet and the common forklift. It is safe and convenient, can make full use of the space.

**Selective pallet racking** is the most common pallet racking system. It's used for large SKU or products in warehouses to save your warehouse space and area, allow you easy to loading and unloading your pallets. Usually has single rows placed at the walls and back-to-back rows placed in between.



#### Advantage:

More usage: Match with your industry with our selective pallet racking. It's easy to accommodate lift trucks, forklifts.

More space: Maximizes your warehouse space not just increased the warehouse area, but use pallet racking to enlarge space usage without extra cost.

More convenient: Direct access the pallet loading and unloading. By the rules of FIFO (First-in-First-Out) Selective pallet racking allow access to every pallet. Simple to install and reconfigure

More Cheaper: Save a lot money on your warehouse storage.

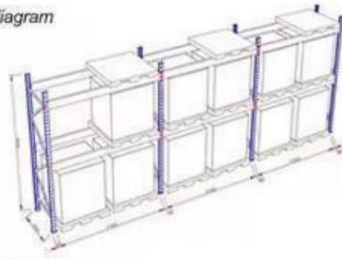
<b>Length</b>	Customized
<b>Width</b>	Customized
<b>Height</b>	Customized
<b>Material</b>	Q235B
<b>OEM&amp;ODM</b>	Available
<b>Surface Treatment</b>	Galvanized/Powder Coating
<b>Color</b>	Customized
<b>Sample</b>	Available
<b>General Use</b>	Warehouse Shelving/Rack, etc.

Load/kg \ Length Beam Spec	1500	1800	2000	2300	2500	2700	3000	3300
80 × 50	3000	2300	1800	1500	1200	1000	800	700
100 × 50	4000	4000	3000	2400	2000	1750	1400	1100
120 × 50	4000	4000	4000	3500	3000	2500	2000	1800
140 × 50	4000	4000	4000	4000	4000	3800	3000	2500

#### Detailed Photos

### Design drawing of cross beam shelf

Single row diagram

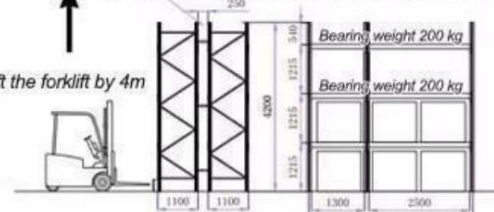


**SPECIFICATION:**  
12300 (inside) \* w900 \* h3000

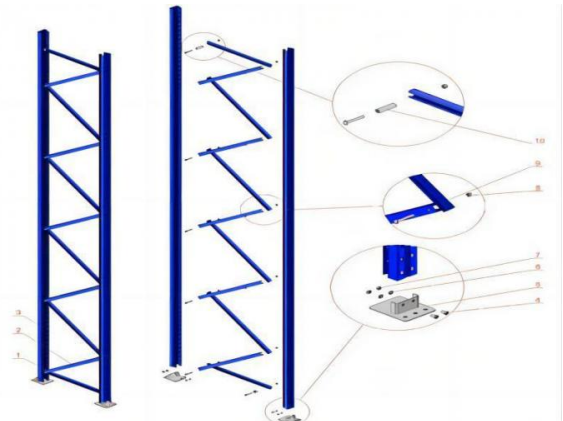
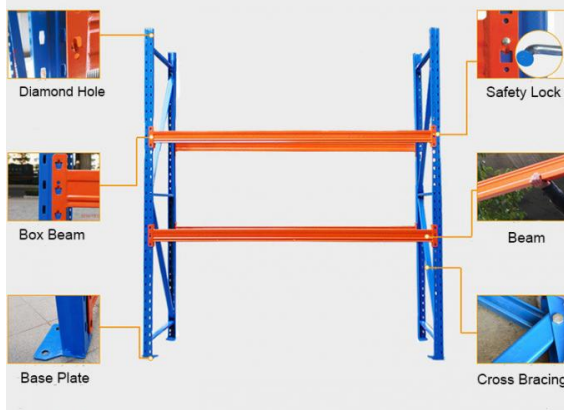
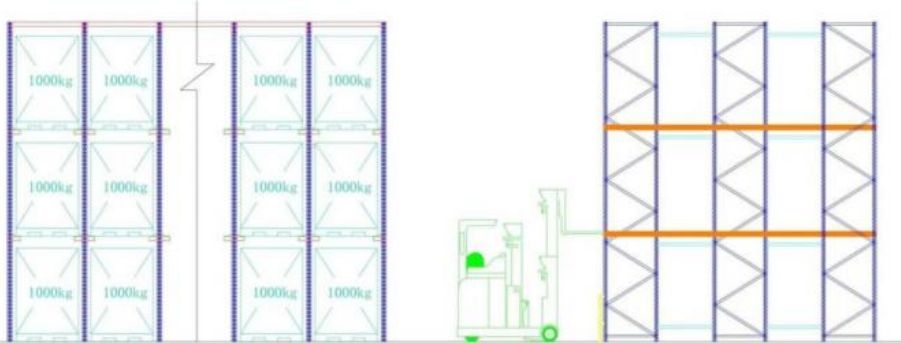
### Design drawing of cross beam shelf

Configurable connecting rod,  
Two sets of shelves can be connected as a whole

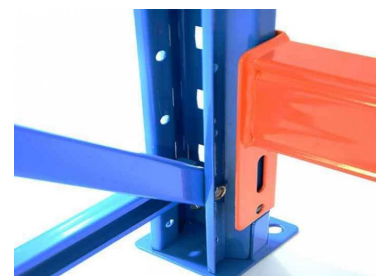
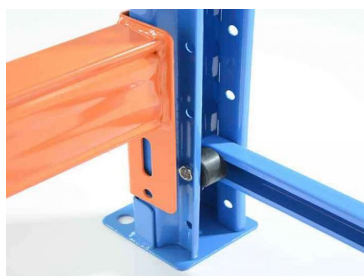
Lift the forklift by 4m



Main shelf Auxiliary shelf

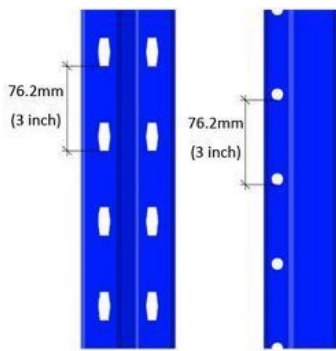


1. Horizontal Bracing
2. Diagonal Bracing
3. Upright Column
4. Bolt for Base-Column Connect
5. Base Plate
6. Bolt Washer
7. Nut Cap
8. Nut Cap for Bracing Connect
9. Bolt for Bracing Connect
10. Sleeve



**Uprights**

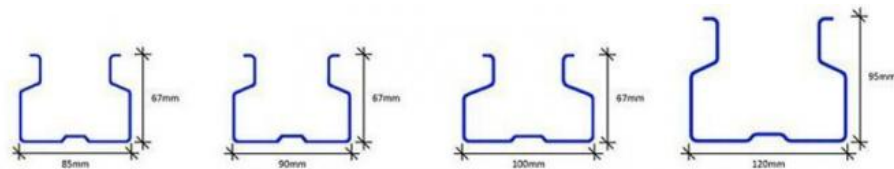




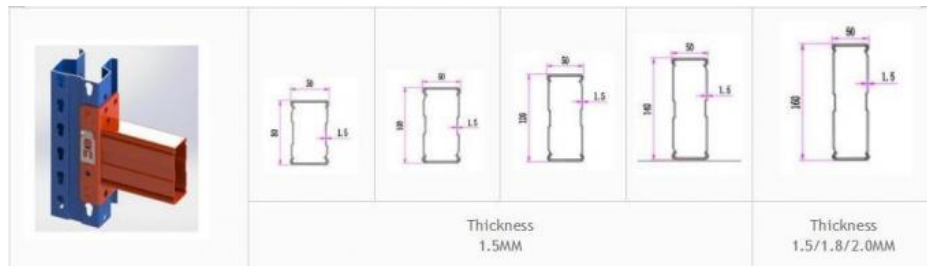
### Upright Frame

The bolt-on pallet rack system consists of 2 perforated uprights (standard finish electrostatic epoxy blue RAL 5017). Lattice supports are made of unfolded C-shaped or tube profiles.

The uprights are provided with a base plate and are fixed to the floor by means of anchor bolts.



### Beam

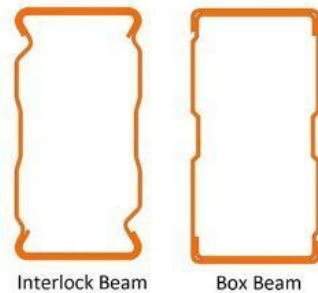


Beam consist of hollow profiles with beam end connectors welded to each end for connection to the uprights. Beam end connectors are available with 3 or 4 pins. The beams have electrostatic epoxy powder coating (standard finish orange RAL 2004). Safety pins can also be used to prevent the beam from unhooking.

QIFEI Storage offers two cross-section profiles for beams - interlocking beams and box beams.

The multi-bend design upgrades the rebar to beams of various sizes, while greatly reducing the mechanical side effects of deformation that have been shown in the past on long materials.

Under the same load-bearing capacity, different profiles will meet the needs of different markets and thus meet customer preferences.



### Beam Connector



According to the beam section size, 3-hole or 4-hole hooks can be selected to meet different bearing capacity requirements. There is a safety lock at the connection to lock the beam. The safety lock is pre-installed at the factory, which improves the installation work efficiency and avoids the safety problem without a safety lock.

During the operation, since the forklift hits the beam, as long as the safety lock is not ejected, the beam will still be stuck on the column. Security risks can thus be avoided.

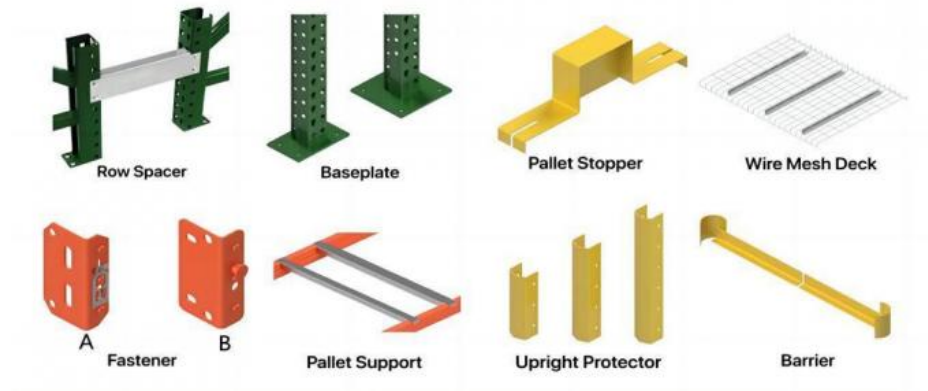
### Pallet rack accessories

contains **footplates, upright protector, wish mesh decking, row spacer, etc**, you can purchase all the additional units of racking system from us, for your better warehouse storing.

Qifei Storage offers all rack accessories to modify racks to fit stored products. Shelving accessories are often

required for safe storage and warehouse operations. They provide additional functions for your shelves and warehouses such as support, protection, connection.

## PALLET RACK ACCESSORIES



## PRODUCE PROCESS



Company Profile

**Welcome to visit our company**

## Jiangsu Qifei Intelligent Storage Equipment Co., Ltd



Established in 2020, is one of the leading manufacturer specialized in industrial warehouse storage equipment.



Main products are heavy/medium/light duty rack, cantilever rack, mezzanine floor, drive in rack, and so on.



We aim to provide cost-effective and space utilization storage solutions for all customers worldwide

### Certifications



### Co-operation Process



### Required information for quote

- 1, The AUTOCAD drawing or draft drawing of warehouse or racking.
- 2, Length, Height, and Width of the warehouse.
- 3, Layers of the racking
- 4, Pallet size.
- 5, Max weight of pallet with cargo on.
- 6, Color requirement.

### Packaging & Shipping



MOT AS YOUR REQUEST



AIR FREIGHT FOR URGENT  
Transit time: 5-7 days



OCEAN SHIPPING NORMALLY  
Transit time: 15-40 days

## FAQ

Q: Where is your factory? Can I visit it?

A: Our factory located in Nanjing, Welcome to visit our factory. We can arrange pick-up from the airport or train station for you.

Q: What parameters do I need to provide for an accurate quotation?

- 1) Quantity(set)
- 2) Size: Length\*Width\*Height (mm) or samples or technical drawings
- 3) Load capacity per layer(kg)
- 4) Number of layers

Q: What is the material being used for your products?

A: Mild steel Q235.

Q: I don't have drawing or picture available for the products, could you design it for me?

A: Yes, we can make the best suitable design for you but need to know more details.

Q: Do I get any guarantee from your company?

A: 3~10 years warranty

Q: How do you make our business long-term and good relationship?

A: Quality makes trust and reputation, plus competitive price to ensure our customers benefit ;



**Jiangsu Qifei Intelligent Storage Equipment Co., Ltd.**



+86-15161451461



sharonyan@qifeirack.com



warehouse-rackings.com

Add: #739 Dixiu Road Jiangning District Nanjing China