



High Density Electric QF-Mobile Racking Customized Automated Pallet Rack For Warehouse

Our Product Introduction

for more products please visit us on warehouse-rackings.com

Basic Information

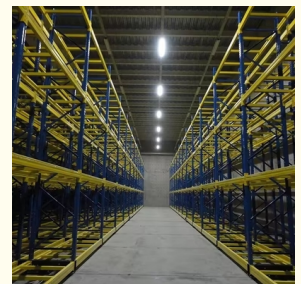
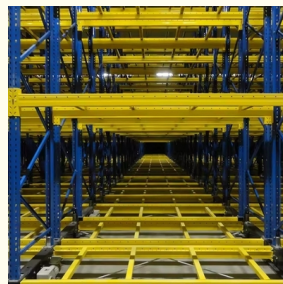
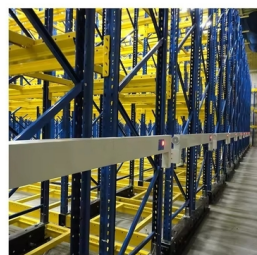


Product Specification

- | | |
|----------------------|---------------------------|
| • Model NO.: | QF-Mobile Racking |
| • Type: | Pallet Racking |
| • Mobility: | Fixed |
| • Height: | 5-15m |
| • Closed: | Open |
| • Development: | Conventional |
| • Serviceability: | Common Use |
| • Color: | Customized |
| • Lead Time: | 20 Days |
| • Raw Material: | Q235B |
| • Surface Treatment: | Galvanized/Powder Coating |
| • Transport Package: | Standard Export Packing |
| • Specification: | Customized |
| • Trademark: | Customized |
| • Origin: | China Nanjing |



More Images



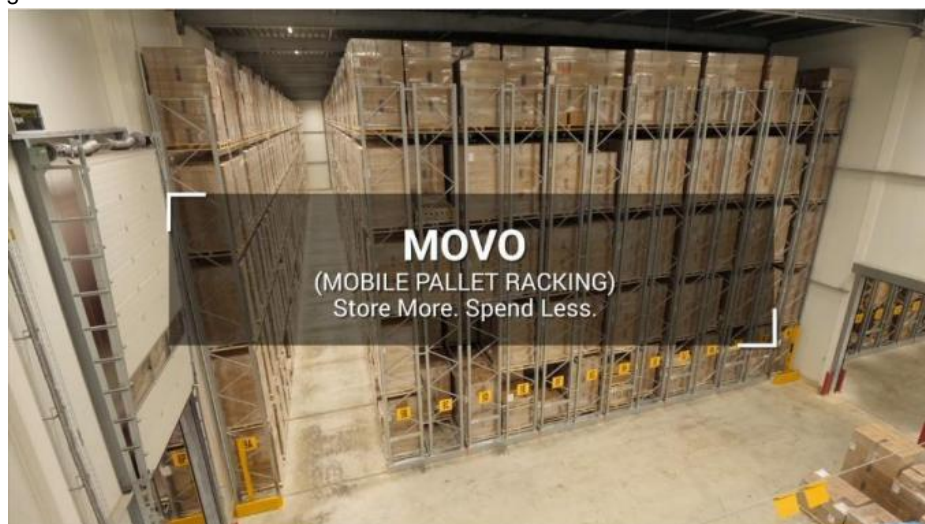
Product Description

Product Description



Mobile pallet racking(MOVO):

Also known as mobile shelving or compact storage, is a type of storage system that utilizes motorized or manual-powered mobile carriages to move shelving units back and forth, commonly used in various industries, such as warehousing, distribution centers, archives, libraries, and museums, where space optimization and efficient storage are crucial.



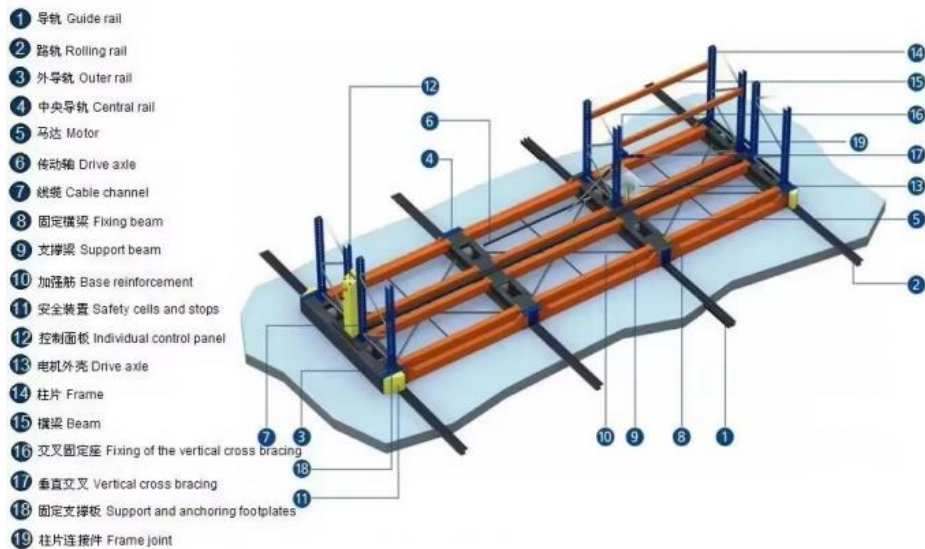
Dimensions:	Trolley length: up to 90m
	Rack height: up to 15m
	Bay width: up to 5.000mm
Loading:	Bay load: up to 30 tons
	Shelf load: up to 6 tons
	Speed: up to 4.2 m/min
Operating temperature:	-30°C to +40°C (optional down to -40°C)
Connectivity:	Use WMS
Standards:	Designed in accordance with the European Directive 2006/42/EG and DIN EN 15095.

Type			
Run Mode	Manual-drive		Motor drive
Structure	Open	Semi-open	Closed



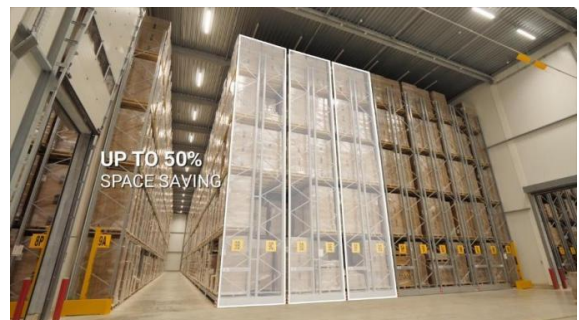
Detailed Photos

Mobile Racking (MOVO) is a dynamic solution providing up to double the storage capacity in the same area, of conventional pallet racking. Offering technical superiority and total flexibility, MOVO is suitable for every kind of stored goods, and has a wide range of accessories.



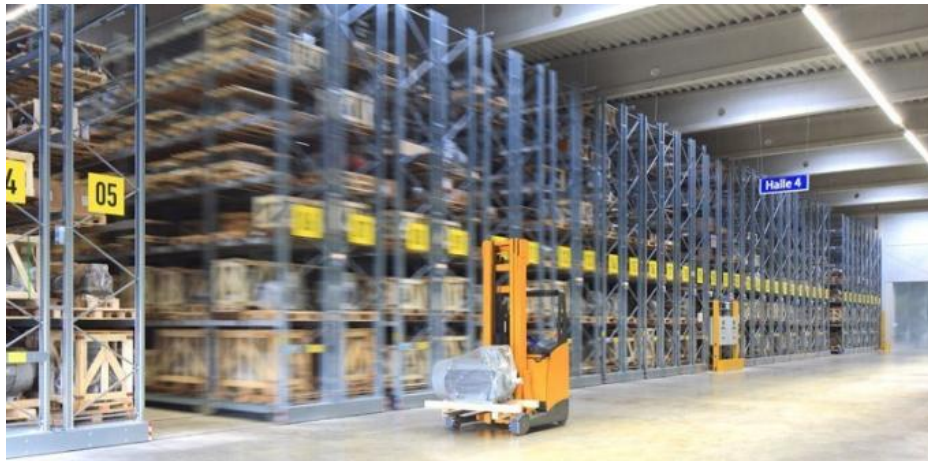
Key features of mobile racking:

1,Space Optimization: By eliminating the fixed aisles between stationary shelving units, mobile racking increase storage capacity by up to 100% in the same floor area.



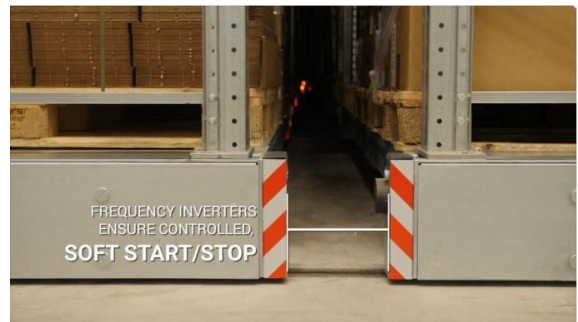
2,Accessibility: The movable shelving units allow for easy access to stored items, as the aisles can be opened only when needed.

3,Flexibility: Mobile racking systems can be customized to accommodate different shelf sizes, load capacities, and integration with other storage equipment.



4,Security: Mobile racking systems equipped with access control and locking mechanisms to ensure the security of the stored items.

5.Improved Workflow: The efficient use of space can streamline material handling and logistics, leading to increased productivity and reduced operational costs.



The electronically controlled MOVO high-load racking system runs on in-ground rails and can carry bay loads of up to 24 tons at racking heights of up to 15 meters. While state-of-the-art sensor technology and variable control options ensure ease of operation and absolute safety.



Installation Instructions



Packaging & Shipping

Package



Shipment



MOT AS YOUR REQUEST



AIR FREIGHT FOR URGENT
Transit time: 5-7 days



OCEAN SHIPPING NORMALLY
Transit time: 15-40 days

Company Profile

Welcome to visit our company

Jiangsu Qifei Intelligent Storage Equipment Co., Ltd

Established in 2020, is one of the leading manufacturer specialized in industrial warehouse storage equipment

Main products are heavy/medium/light duty rack, cantilever rack, mezzanine floor, drive in rack, and so on.

We aim to provide cost-effective and space utilization storage solutions for all customers worldwide



FAQ

Q: Are you manufacturer or trading company?

A: We are experienced manufacturer in the warehouse storage industry.

Q: How is your delivery time?

A: Generally, it is within 25 days against formal order and deposit. It also depends on other factors such as order quantity.

Q: What is the payment term?

A: T/T 30% as deposit, and 70% before delivery. We'll show you the photos of the products and packages before you pay the

balance.

Q: What is your terms of delivery?

A: EXW, FOB

Q: Are samples available?

A: Yes, We can supply the sample if we have ready parts in stock, but the customers have to pay the sample cost and the courier cost.

Q: What is the minimum order quantity?

A: Generally, MOQ is 10sets.

Q: Can I make my own brand and designed products?

A: Yes, we do both OEM and ODM, so you can make your own product with your own logo.

Q: Where is your factory? Can I visit it?

A: Our factory located in Nanjing, Welcome to visit our factory. We can arrange pick-up from the airport or train station for you.

Q: What parameters do I need to provide for an accurate quotation?

- 1) Quantity(set)
- 2) Size: Length*Width*Height (mm) or samples or technical drawings
- 3) Load capacity per layer(kg)
- 4) Number of layers

Q: What is the material being used for your products?

A: Mild steel Q235.

Q: I don't have drawing or picture available for the products, could you design it for me?

A: Yes, we can make the best suitable design for you but need to know more details.

Q: Do I get any guarantee from your company?

A: 3~10 years warranty

Q: How do you make our business long-term and good relationship?

A: Quality makes trust and reputation, plus competitive price to ensure our customers benefit ;

More Choice



Jiangsu Qifei Intelligent Storage Equipment Co., Ltd.



+86-15161451461



sharonyan@qifeirack.com



warehouse-rackings.com

Add: #739 Dixiu Road Jiangning District Nanjing China