



Warehouse Shelving Storage Equipment Steel Light Duty Racking System 2000*500*2500

Our Product Introduction

for more products please visit us on warehouse-rackings.com

Basic Information



Product Specification

- Model NO.: QF-Light Duty
- Material: Steel
- Structure: Rack
- Type: Pallet Racking
- Mobility: Adjustable
- Height: 0-5m
- Weight: 150kg
- Closed: Open
- Development: Conventional
- Serviceability: Common Use
- Color: Customized
- Lead Time: 25 Days
- Raw Material: Q235
- Surface Treatment: Powder Coating
- Transport Package: Safe



More Images



Product Description

Product Description



Light duty rack refers to a type of storage rack system that is designed to hold lighter weight loads compared to heavier duty industrial racking, which is **easy to disassemble**, **easy to adjust**, can be **flexibly assembled**, and **highly adaptable**. They can **increase or decrease the number of layers** according to the placement requirements of items to achieve the best storage effect.

Product Name	Standard 5 Layers, Slotted Angle Shelving storage for home, office, and warehouse
Number of Layer	2 - 7 layers, can be combined freely
Loading Weight	Holding weight UDL 50KG - 150KG/layer
Application	Home, Office, Warehouse
Charactoristic	Environmental powder-coated and Anti-corrosion

Intended for **storing lighter items** like boxes, cartons, small parts, files, etc. - not heavy palletized goods.

Typically has lower weight capacity per shelf level, often in the range of **100-500 lbs per shelf**.

Shelf depths are usually shallower, around **12-18 inches deep**.

Shelves are often **adjustable** to accommodate different product sizes.

Commonly used in **retail stockrooms, offices, garages, warehouses for lighter storage needs**.

More **affordable and easier to install** than heavy duty industrial pallet racks.

Provides **good visibility and accessibility** to stored items on the shelves.

Suited for **manual handling** rather than powered equipment like forklifts.

Detailed Photos

Product color (customizable)



Dimensions

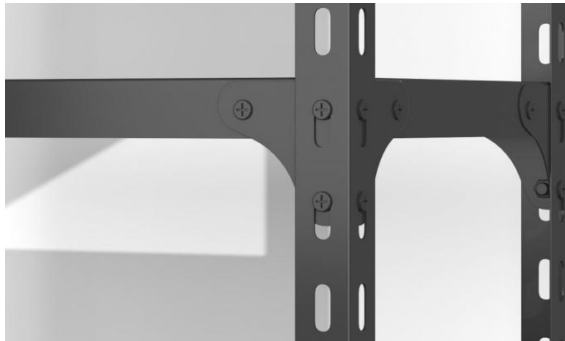
L60*W30*H60/80/120/150/180CM	L60*W40*H60/80/120/150/180CM
L70*W30*H60/80/120/150/180CM	L70*W40*H60/80/120/150/180CM
L80*W30*H60/80/120/150/180CM	L80*W40*H60/80/120/150/180CM
L90*W30*H60/80/120/150/180CM	L90*W40*H60/80/120/150/180CM

L100*W30*H60/80/120/150/180CML100*W40*H60/80/120/150/180CM

L120*W30*H60/80/120/150/180CML120*W40*H60/80/120/150/180CM



Details

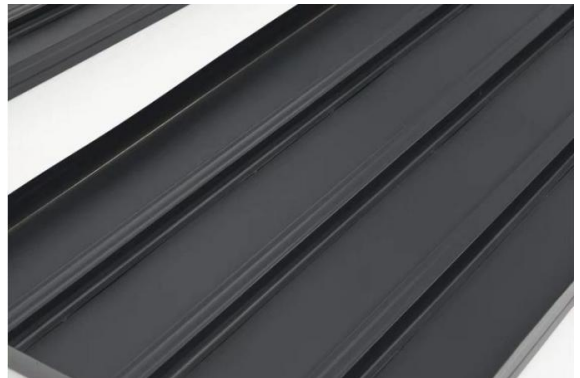


Stand Details

The Light Duty Shelving has adjustment holes on both sides, so the height can be adjusted freely according to needs.

Decking Details

There are multiple reinforcing ribs on the back of the SHELVING DECKING

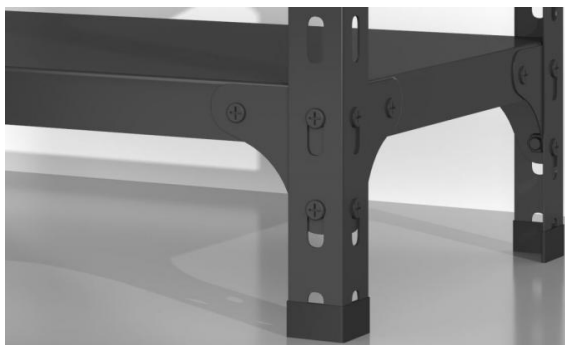


Triangle Screw

Quality hardware accessories
Made of high-quality hardware screws
Tightly connected
Strong and stable
Waterproof and rust-proof

Feet Covers

The installation accessory foot covers are made of high-quality plastic to effectively protect the floor and increase stability.



Real Case Display





Produce Process



Raw Material

Cold Rolling

Rust Removal



Cutting Plate

Bending

Welding

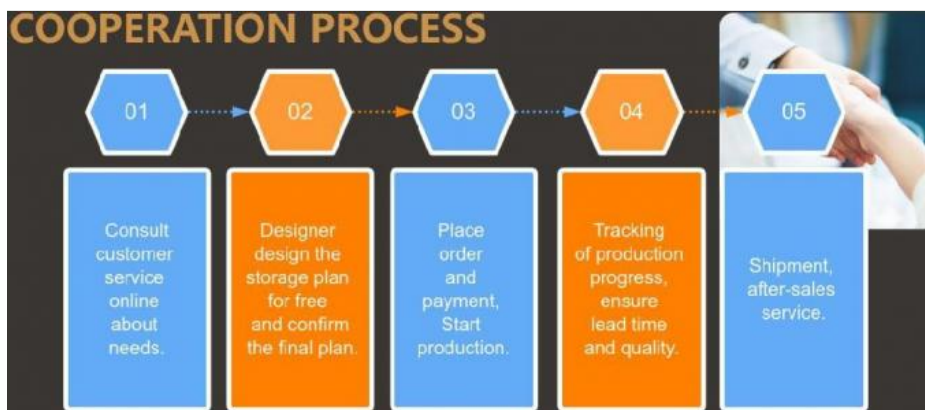


Powder Coating

Packing

Loading Container

Co-operation Process



Packaging & Shipping

Packaging: Customized packing methods is supported



Shipping:



MOT AS YOUR REQUEST



EXPRESS
Express door to door is the most convenient one. 5-7days will arrive

AIR FREIGHT FOR URGENT
Transit time:5-7 days



OCEAN SHIPPING NORMALLY
Transit time:15-40 days

Company Profile

Jiangsu Qifei Intelligent Storage Equipment Co., Ltd



Established in 2020, is one of the leading manufacturer specialized in industrial warehouse storage equipment.



Main products are heavy/medium/light duty rack, cantilever rack, mezzanine floor, drive in rack, and so on.



We aim to provide cost-effective and space utilization storage solutions for all customers worldwide



FAQ

Q: Are you manufacturer or trading company?

A: We are experienced manufacturer in the warehouse storage industry.

Q: How is your delivery time?

A: Generally, it is within 25 days against formal order and deposit. It also depends on other factors such as order quantity.

Q: What is the payment term?

A: T/T 30% as deposit, and 70% before delivery. We'll show you the photos of the products and packages before you pay the balance.

Q: What is your terms of delivery?

A: EXW, FOB

Q: Are samples available?

A: Yes, We can supply the sample if we have ready parts in stock, but the customers have to pay the sample cost and the courier cost.

Q: What is the minimum order quantity?

A: Generally, MOQ is 10sets.

Q: Can I make my own brand and designed products?

A: Yes, we do both OEM and ODM, so you can make your own product with your own logo.

Q: Where is your factory? Can I visit it?

A: Our factory located in Nanjing, Welcome to visit our factory. We can arrange pick-up from the airport or train station for you.

Q: What parameters do I need to provide for an accurate quotation?

- 1) Quantity(set)
- 2) Size: Length*Width*Height (mm) or samples or technical drawings
- 3) Load capacity per layer(kg)
- 4) Number of layers

Q: What is the material being used for your products?

A: Mild steel Q235.

Q: I don't have drawing or picture available for the products, could you design it for me?

A: Yes, we can make the best suitable design for you but need to know more details.

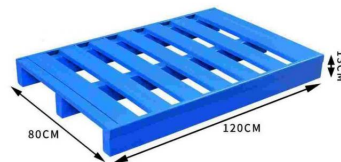
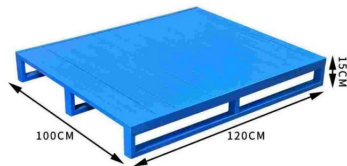
Q: Do I get any guarantee from your company?

A: 3~10 years warranty

Q: How do you make our business long-term and good relationship?

A: Quality makes trust and reputation, plus competitive price to ensure our customers benefit ;

Hot Sales



Jiangsu Qifei Intelligent Storage Equipment Co., Ltd.



+86-15161451461



sharonyan@qifeirack.com



warehouse-rackings.com

Add: #739 Dixiu Road Jiangning District Nanjing China