



## Customized Heavy Duty Stackable Steel Crates With 5000 Lbs Static Load Capacity

Our Product Introduction

For more products please visit us on [warehouse-rackings.com](http://warehouse-rackings.com)

### Basic Information

- Place of Origin: China
- Brand Name: Qifei
- Certification: ISO9001 CE SGS
- Model Number: Pallets
- Minimum Order Quantity: 10
- Price: 50
- Packaging Details: Standard Export
- Delivery Time: 20 days after deposit
- Payment Terms: 30% deposit, 70% before delivery
- Supply Ability: 8000ton/year

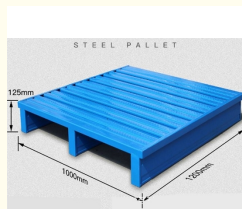


### Product Specification

- Features: Durable, Lightweight, Easy To Clean
- Static Load: 5,000 Lbs
- Forklift Entry: 4-way/2-way
- Weight: 30 Lbs
- Stacking Capacity: 4-6 Pallets
- Size: 48 X 40 Inches
- Color: Customized
- Racking Load: 2,500 Lbs
- Highlight: 48 x 40 inches stackable steel crates ,  
48 x 40 inches stackable steel pallets



### More Images



1. The panel have half and full two type, can be selected according to demand
2. Edge band to strengthen the protection of the panel and reduce damage
3. Covering the outlet of the tubes on the feet
4. As the pallet foot is the main part to bear the weight, so we use square tube



**M-shaped reinforced Panels**  
Stronger  
Longer service life  
Wear-resistant & durable

Designed by expert  
Solid and good



Our Product

### Product Description

Customized Heavy Duty Stacked Steel Crates with 5000 Lbs Static Load Capacity

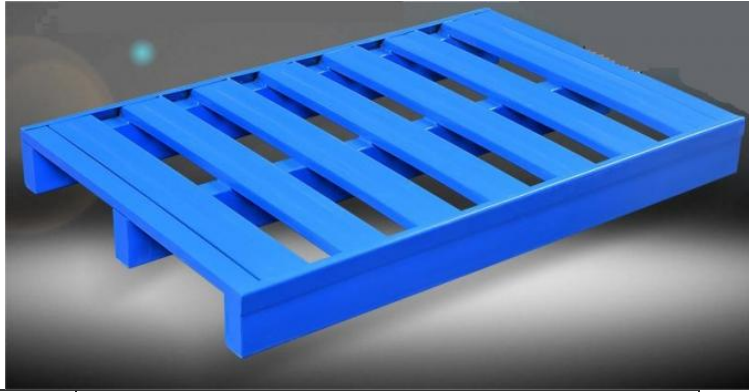
**Product Description:**

**Steel Pallet** is becoming more and more popular all around the world.

Steel pallet is made up of **support feet** and **face board**.

It can be sorted as **two-way access type** and **four-way access type**.

It is mainly used for ground storage, shelf storage, cargo transport and turnover, as container, stacking, handling and transportation of the place as a horizontal platform device unit load of goods and products, and is now an important warehousing and transportation industry auxiliary equipment one.

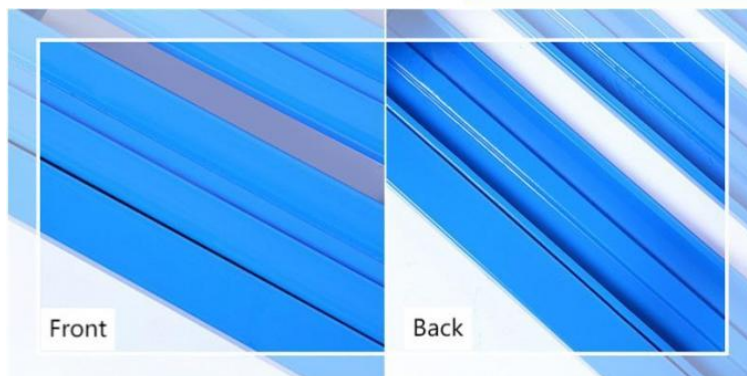


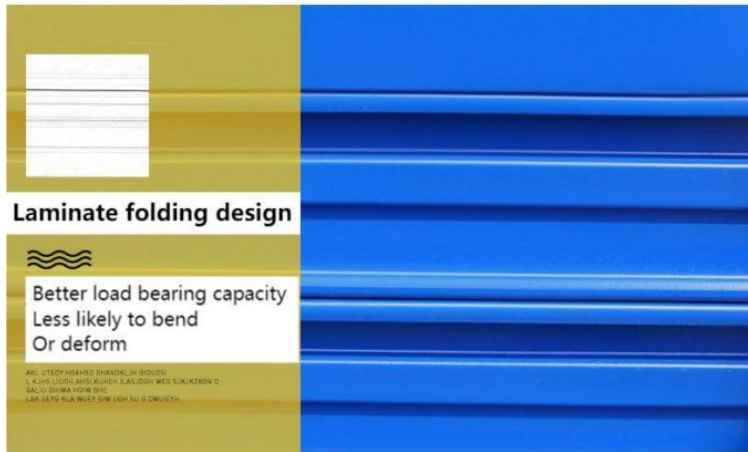
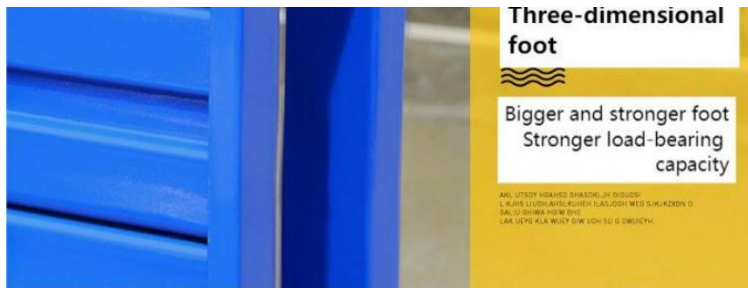
Size	1000x800mm, 1000x1000, 1100x1100mm, 1200x800mm, 1200x1000mm, 1200x1200mm Customized
Height	125mm, 150mm or customized
Load Capacity	100~3000kg
Color	Blue/Orange/Grey/Yellow or customized
Forklift Entry	2-way/4-way
Application	Warehouses, factories, industrial units, stockrooms,distribution centre, workplace, workshops, supermarkets, grocery stores, etc

#### Customization:

Designed by experienced engineer  
Solid and good looking







### Support and Services:

Our Stackable Pallets are made with high-quality materials and designed to withstand heavy loads and repeated use. However, if you encounter any issues or have questions about the product, our technical support team is available to assist you.

We offer a range of services to help you get the most out of your Stackable Pallets, including:

- Product installation guidance
- Troubleshooting assistance
- Customization options

Our goal is to ensure your satisfaction with our product and provide you with the support you need to achieve your goals. Contact us for more information or assistance.



## Packing and Shipping:

		
MOT AS YOUR REQUEST	AIR FREIGHT FOR URGENT Transit time:5-7 days	OCEAN SHIPPING NORMALLY Transit time:15-40 days



**Jiangsu Qifei Intelligent Storage Equipment Co., Ltd.**



+86-15161451461



sharonyan@qifeirack.com



warehouse-rackings.com

Add: #739 Dixiu Road Jiangning District Nanjing China