

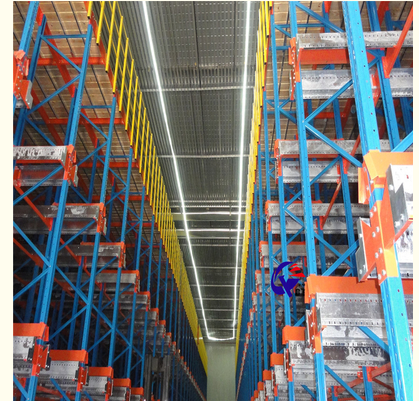


1200x1200 Radio Shuttle Pallet Racking High Density For Warehouse Organization

Our Product Introduction

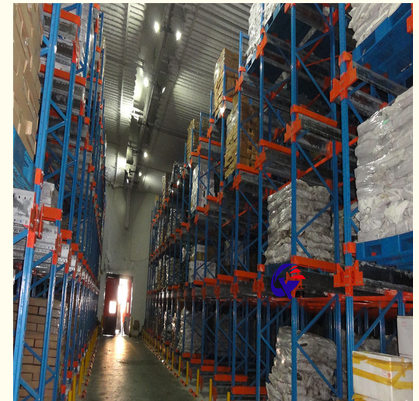
for more products please visit us on warehouse-rackings.com

Basic Information

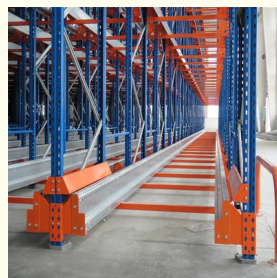
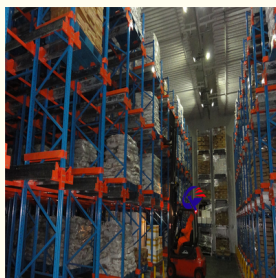


Product Specification

- | | |
|----------------------|-------------------------|
| • Model NO.: | QF-Shuttle Racking |
| • Material: | Steel |
| • Structure: | Rack |
| • Type: | Pallet Racking |
| • Mobility: | Fixed |
| • Height: | 5-15m |
| • Weight: | 2000 |
| • Closed: | Open |
| • Development: | New Type |
| • Serviceability: | Common Use |
| • Color: | Customized |
| • Lead Time: | 25 Days |
| • Raw Material: | Q235 |
| • Surface Treatment: | Powder Coating |
| • Transport Package: | Standard Export Packing |



More Images



Product Description

Type 1200*1200*3600 Chinese Radio Shuttle Pallet Racking for Warehouse Organization

Product Description

QiFei SHUTTLE RACKING SYSTEM:

The shuttle racking system is a high-density storage system composed of racks, remote-controlled shuttles and forklifts. Utilizing the characteristics of the shuttle car itself, combined with the son and mother car, stacker, warehouse management software, etc., the system can be transformed into a shuttle stereoscopic ware-house system.

It is suitable for storing large quantity of goods with less types, goods of batched working and small range of selection. The goods are stored on the support guide rail with the pallet one after another in the direction of depth, increasing the space availability. It is quite convenient for fork truck drives into lane directly to store or take out the goods.



Dimensions	standard pallet size 1200x1000 / 1200x1200 / 1100x1100 / 1200x800mm
Loading	2000KG per pallet(max)
Stacking levels	4 beam levels
Thickness section	upright 88*68 / 100*68mm; beam 80~100*45
Colour	Blue, orange, Yellow and Grey or customized
Custom design	Accepted
Surface treatment	Galvanized/Powder Coating
Quality&Services	1. Free customized design 2. Installation Instructions provided. 3. Quality certificate at least 5 years. 4. We will deliver back-up accessories for maintenance along the container.

Required information for quote

- 1, The AUTOCAD drawing or draft drawing of warehouse or racking.
- 2, Length, Height, and Width of the warehouse.
- 3, Layers of the racking
- 4, Pallet size.
- 5, Max weight of pallet with cargo on.
- 6, Color requirement.

Detailed Photos

Compared with **Drive-in racks**, the forklift does not need to enter the tunnel of **shuttle racks**, saving operation time, and the space utilization rate is over 80%, which improves the quality of personnel and goods.

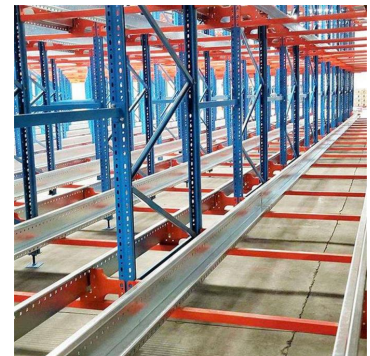
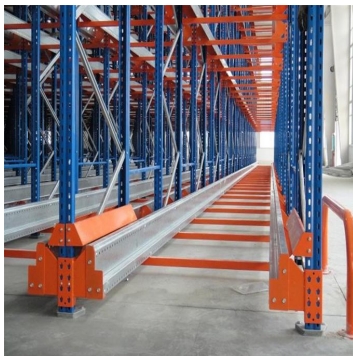
Drive-in racks

VS

Shuttle racks



The shuttle rack can adopt both **FIFO & FILO**, the operation mode is flexible, which greatly improves the work efficiency when checking the goods.



Customer Site



Produce Process



Raw Material

Cold Rolling

Rust Removal



Cutting Plate

Bending

Welding



Powder Coating

Packing

Loading Container



Packaging &
Shipping

Packing



Package for Upright Frame



Package for Beam



Loading for Beam



Loading for Upright Frame



Loading for Wire Mesh Cage

Shipping



MOT AS YOUR REQUEST

AIR FREIGHT FOR URGENT
Transit time:5-7 days

OCEAN SHIPPING NORMALLY
Transit time:15-40 days

Company

Profile

Welcome to visit our company

Jiangsu Qifei Intelligent Storage Equipment Co., Ltd



Established in 2020, is one of the leading manufacturer specialized in industrial warehouse storage equipment



Main products are heavy/medium/light duty rack, cantilever rack, mezzanine floor, drive in rack, and so on.



We aim to provide cost-effective and space utilization storage solutions for all customers worldwide



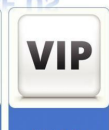
WHY CHOOSE US



Customization

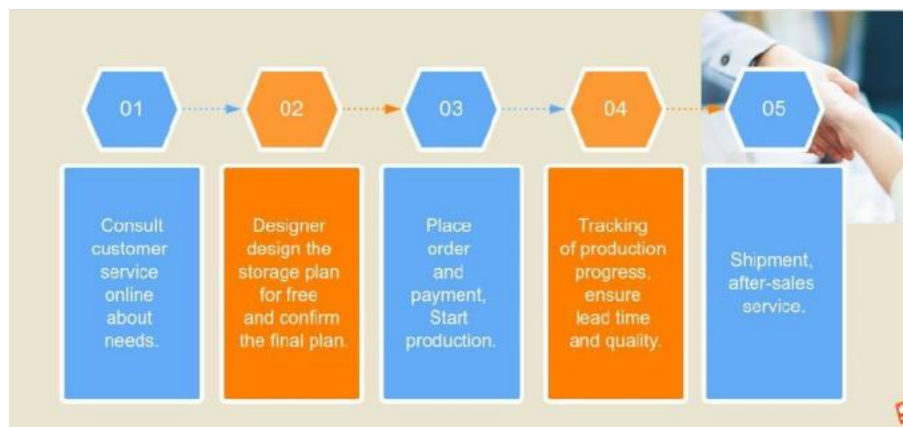


Free Design



Best Price

Co-operation Process



FAQ

Q: Are you manufacturer or trading company?

A: We are experienced manufacturer in the warehouse storage industry.

Q: How is your delivery time?

A: Generally, it is within 20 days against formal order and deposit. It also depends on other factors such as order quantity.

Q: What is the payment term?

A: T/T 30% as deposit, and 70% before delivery. We'll show you the photos of the products and packages before you pay the balance.

Q: What is your terms of delivery?

A: EXW, FOB

Q: Are samples available?

A: Yes, We can supply the sample if we have ready parts in stock, but the customers have to pay the sample cost and the courier cost.

Q: What is the minimum order quantity?

A: Generally, MOQ is 10sets.

Q: Can I make my own brand and designed products?

A: Yes, we do both OEM and ODM, so you can make your own product with your own logo.

Q: Where is your factory? Can I visit it?

A: Our factory located in Nanjing, Welcome to visit our factory. We can arrange pick-up from the airport or train station for you.

Q: What is the material being used for your products?

A: Mild steel Q235.

Q: I don't have drawing or picture available for the products, could you design it for me?

A: Yes, we can make the best suitable design for you but need to know more details.

Q: Do I get any guarantee from your company?

A: 3 years warranty

Q: How do you make our business long-term and good relationship?

A: Quality makes trust and reputation, plus competitive price to ensure our customers benefit ;

More Choice



Jiangsu Qifei Intelligent Storage Equipment Co., Ltd.



+86-15161451461



sharonyan@qifeirack.com



warehouse-rackings.com

Add: #739 Dixiu Road Jiangning District Nanjing China