



Customizable Heavy Duty Pallet Type Drive In Warehouse Storage Rack System For Forklift

Basic Information



Product Specification

- Model NO.: QF-Drive In Rack
- Material: Steel
- Structure: Rack
- Type: Pallet Racking
- Mobility: Fixed
- Height: 5-15m
- Weight: 2000
- Closed: Open
- Development: New Type
- Serviceability: Common Use
- Color: Customized
- Lead Time: 25 Days
- Raw Material: Q235
- Surface Treatment: Powder Coating
- Transport Package: Standard Export Packing



More Images



Our Product Introduction

for more products please visit us on warehouse-rackings.com

Product Description

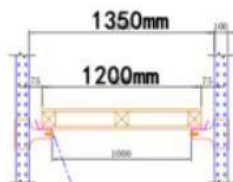
Customizable Heavy Duty Pallet Type Drive-In Warehouse Storage Rack System For Forklift

Product Description

QiFei Drive-in rack:

Drive-in rack is a high-density and very space-efficient type. Drive In or Double Access Systems (Drive-through Racking) consists of continuous lanes of racking with only a single load and retrieval aisle. Loading and unloading is undertaken by means of counter balance or reach trucks that drive down each lane into the racks.

Single Way Entry/FILO



Double Way Entry/FIFO



Dimensions	standard pallet size 1200x1000 / 1200x1200 / 1100x1100 / 1200x800mm
Loading	2000KG per pallet(max)
Stacking levels	4 beam levels
Thickness section	upright 88*68 / 100*68mm; beam 80~100*45
Colour	Blue, orange, Yellow and Grey or customized
Custom design	Accepted
Surface treatment	Galvanized/Powder Coating
Quality&Services	<ol style="list-style-type: none"> 1. Free customized design 2. Installation Instructions provided. 3. Quality certificate at least 5 years. 4. We will deliver back-up accessories for maintenance along the container.

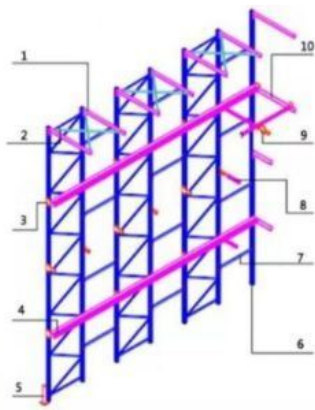
RFQs for drive in rack:

- 1, Under which situation should we use drive in pallet rack?
For inventory with less categories and large quantities for each category.
- 2, How many depth do you plan along each drive in aisle?
For single entry, we suggest no more than 7.
For double entry, we suggest no more than 13.
- 3, what kind of pallet can we use in drive in pallet rack?
pallets with double faced, pallets with three runners base.
Single faced, 9 feet or any plate based will be prohibited.
- 4, How about the installation?
It will take 5-6 persons to do installation.
We have installation drawing for you to follow, it will be easy to carry out project installation if you follow our instruction.
- 5, How long do we need to wait for your production?
20 days before shipment.
- 6, What is your MOQ?
50pallets

Required info for quote

- 1、The AUTOCAD drawing of warehouse or racking
- 2、Length, Height, and Width of the warehouse
- 3、Layers of the racking
- 4、Pallet size
- 5、Max weight of pallet with cargo on
- 6、Color requirement

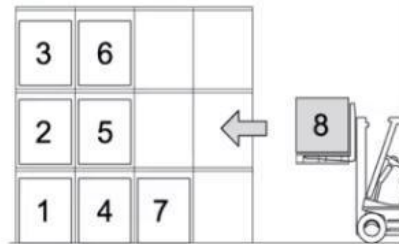
Detailed Photos



- 1, Top Beam
- 3, Support Arm
- 5, Post Protector
- 7, Frame Connector
- 9, Support Arm

- 2, Top Cross
- 4, Pallet Rail
- 6, Post/upright
- 8, Rail Beam
- 10, Stopper Beam

LOADING THE SYSTEM



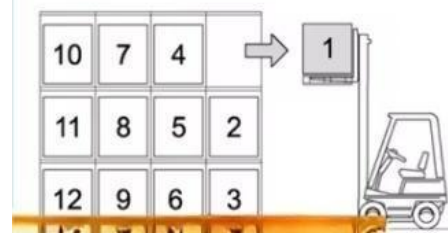
Placing a pallet

1. Driver should square the forklift with the pallet rack bay opening.
2. Lift the pallet 20mm above the rails.
3. Slowly drive to the open pallet position and carefully lower the pallet.
4. Slowly back away from the system.

Retrieving a pallet

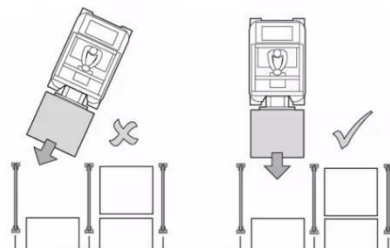
1. Square the forklift outriggers elevated to the height of the pallet to be removed.
2. Secure the pallet with the forklift.
3. Raise the load approximately 20 mm above the rails and slowly and completely out of the system.
4. Carefully turn the forklift in the aisle to prevent rack impact and damage.

UNLOADING THE SYSTEM

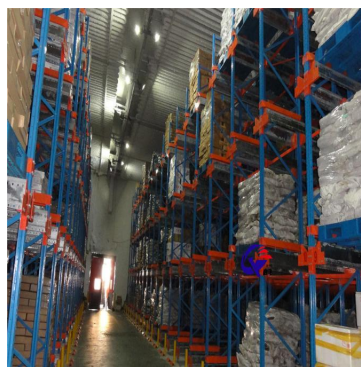


APPROACHING AND ENTERING THE RACK

1. The forklift truck should approach the rack squarely and not at an angle.
2. No attempt should be made to deposit/retrieve pallets or to enter a rack when the truck is NOT correctly aligned.
3. It is not acceptable to attempt to re-align a truck after entry into the rack.



Customer Site





Produce Process



Raw Material



Cold Rolling



Rust Removal



Cutting Plate



Bending



Welding



Powder Coating



Packing



Loading Container



Packaging & Shipping

Packing



Package for Upright Frame



Package for Beam



Loading for Beam



Loading for Upright Frame



Loading for Wire Mesh Cage

Shipping



MOT AS YOUR REQUEST



AIR FREIGHT FOR URGENT
Transit time: 5-7 days



OCEAN SHIPPING NORMALLY
Transit time: 15-40 days

Company Profile

Welcome to visit our company

Jiangsu Qifei Intelligent Storage Equipment Co., Ltd



Established in 2020, is one of the leading manufacturer specialized in industrial warehouse storage equipment.



Main products are heavy/medium/light duty rack, cantilever rack, mezzanine floor, drive in rack, and so on.



We aim to provide cost-effective and space utilization storage solutions for all customers worldwide



WHY CHOOSE US



Customization

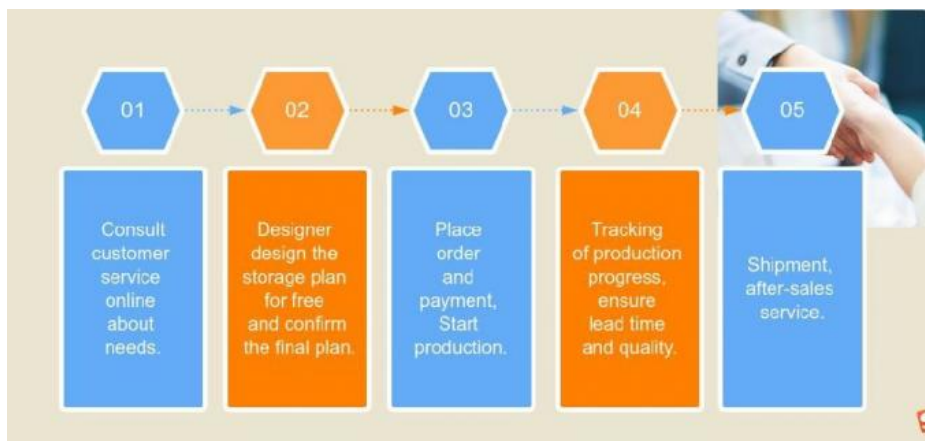


Free Design



Best Price

Co-operation Process



FAQ

Q: Are you manufacturer or trading company?

A: We are experienced manufacturer in the warehouse storage industry.

Q: How is your delivery time?

A: Generally, it is within 20 days against formal order and deposit. It also depends on other factors such as order quantity.

Q: What is the payment term?

A: T/T 30% as deposit, and 70% before delivery. We'll show you the photos of the products and packages before you pay the balance.

Q: What is your terms of delivery?

A: EXW, FOB

Q: Are samples available?

A: Yes, We can supply the sample if we have ready parts in stock, but the customers have to pay the sample cost and the courier cost.

Q: What is the minimum order quantity?

A: Generally, MOQ is 10sets.

Q: Can I make my own brand and designed products?

A: Yes, we do both OEM and ODM, so you can make your own product with your own logo.

Q: Where is your factory? Can I visit it?

A: Our factory located in Nanjing, Welcome to visit our factory. We can arrange pick-up from the airport or train station for you.

Q: What is the material being used for your products?

A: Mild steel Q235.

Q: I don't have drawing or picture available for the products, could you design it for me?

A: Yes, we can make the best suitable design for you but need to know more details.

Q: Do I get any guarantee from your company?

A: 3 years warranty

Q: How do you make our business long-term and good relationship?

A: Quality makes trust and reputation, plus competitive price to ensure our customers benefit ;



Jiangsu Qifei Intelligent Storage Equipment Co., Ltd.



+86-15161451461



sharonyan@qifeirack.com



warehouse-rackings.com

Add: #739 Dixiu Road Jiangning District Nanjing China