



## Customized Narrow Aisle Racking System 1000-4500kg For Palletized Goods

### Basic Information

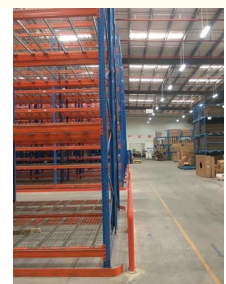
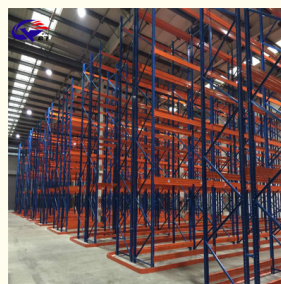
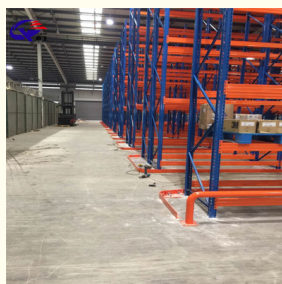


### Product Specification

- Model NO.: QF-VNA
- Material: Steel
- Structure: Rack
- Type: Pallet Racking
- Mobility: Fixed
- Height: 5-15m
- Weight: 1000-4500kg
- Closed: Open
- Development: Conventional
- Serviceability: Common Use
- Color: Customized
- Lead Time: 20 Days
- Raw Material: Q235B
- Surface Treatment: Galvanized/Powder Coating
- Transport Package: Standard Export Packing



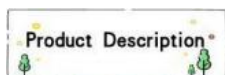
### More Images



Our Product Introduction

for more products please visit us on [warehouse-rackings.com](http://warehouse-rackings.com)

## Product Description



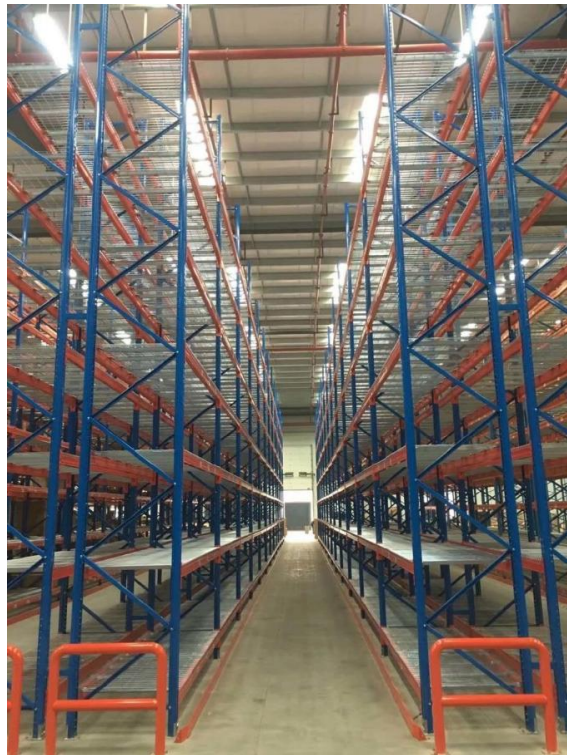
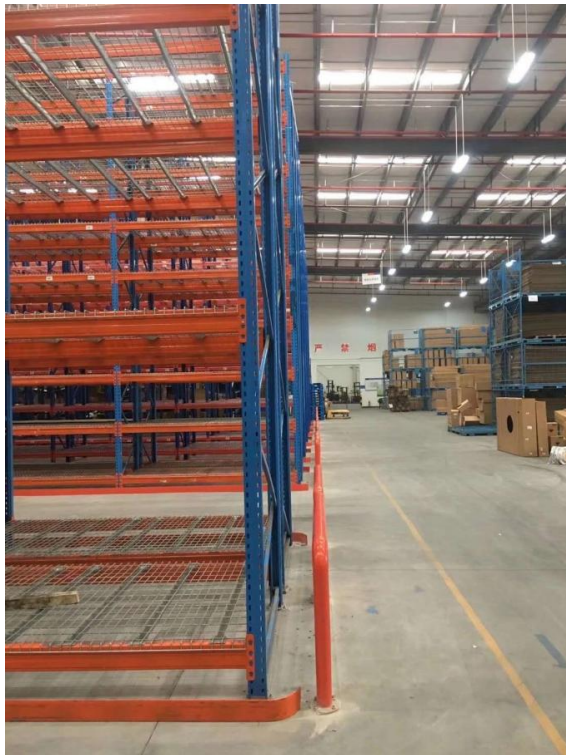
Jiangsu Qifei Intelligent Storage Equipment Co., Ltd.



### QiFei VNA(Very Narrow Aisle) rack:

Very narrow aisle pallet rack mainly used with the most advantage three ways forklift, occupying small aisle, saving space of warehouse, can store and pick up products quickly so as to cut down the operating cost, particularly suitable for logistic center less than 15 m high.

Comparing with the conventional pallet rack, VNA rack aisle is much narrower, ordinarily 1600-2000 mm, the space utilization rate will increase about 20%. Guide rails should be installed on both sides of aisle for the three-way forklift running.



### Advantages

- 1) This storage racking makes optimum use of floor area and roof height by providing high density storage
- 2) Pallets can be located, accessed and moved individually
- 3) The height between levels can be easily adjusted by 50 mm pitch interval
- 4) Strength and rigidity prevents compression damage to goods.
- 5) Bottom level of pallets can be stored on the floor, lowering structure costs.
- 6) Rich accessories: upright protector, guide rail, frame barrier, row spacer, wire deckings, steel shelf, etc

### Required info for quote

- 1、The AUTOCAD drawing of warehouse or racking
- 2、Length, Height, and Width of the warehouse
- 3、Layers of the racking
- 4、Pallet size
- 5、Max weight of pallet with cargo on
- 6、Color requirement

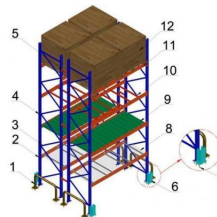
Style	Warehouse Storage Pallet Rack
Selection	Single Row, back-to-back Rows and multiple Rows
Dimension	Standard Pallet: 1200*800(F) / 1200*1000(F) / 1100*1100(F) / 1066(F)*1220 Depth 1000MM / 900MM / 1020MM Width: 2700MM / 2300MM / 2500MM / 2432MM Height: pitch is adjusted by increments of 75mm For Customized case, please contact us directly
Beam	Height:80~160mm; Width:45mm/50mm; Thickness:1.5~2.5mm
Upright	80*60; 90*60; 90*70; 90*75; 100*67; 100*70; 100*75; 120*75; 120*87mm, Thickness:1.5~3.0mm



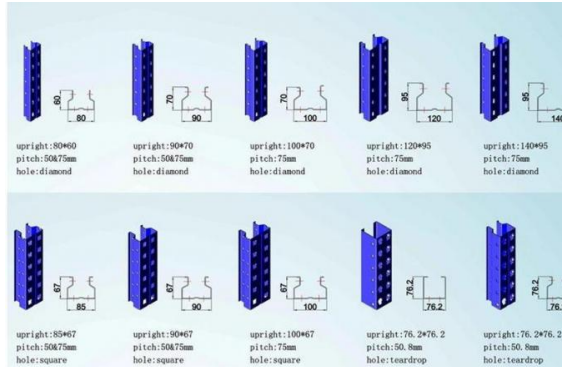
Bearing Capacity

5000KG per level max ; 1500KG per pallet max

## Detailed Photos

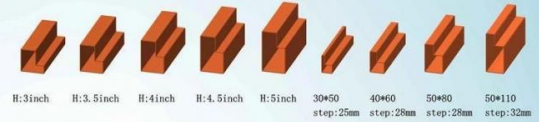


1	Crash Barrier
2	Post
3	Bracing
4	Bolt & Nut
5	Row Spacer
6	Upright Guard
7	Wedge Anchor
8	Mesh Deck
9	Steel Deck
10	Pallet Support
11	Loading Beam
12	Pallet

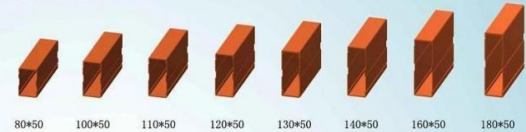


American style step beam

Step beam



50 face box beam



## Produce Process



Raw Material



Cold Rolling



Rust Removal



Cutting Plate



Bending



Welding



Powder Coating



Packing



Loading Container

## WHY CHOOSE US



Packaging & Shipping

## Package



Package for Upright Frame



Package for Beam



Loading for Beam



Loading for Upright Frame



Loading for Wire Mesh Cage

## Shipment



MOT AS YOUR REQUEST



AIR FREIGHT FOR URGENT  
Transit time:5-7 days



OCEAN SHIPPING NORMALLY  
Transit time:15-40 days

## Company Profile

## Welcome to visit our company

### Jiangsu Qifei Intelligent Storage Equipment Co., Ltd



Established in 2020, is one of the leading manufacturer specialized in industrial warehouse storage equipment



Main products are heavy/medium/light duty rack, cantilever rack, mezzanine floor, drive in rack, and so on.



We aim to provide cost-effective and space utilization storage solutions for all customers worldwide



## FAQ

Q: Are you manufacturer or trading company?

A: We are experienced manufacturer in the warehouse storage industry.

Q: How is your delivery time?

A: Generally, it is within 25 days against formal order and deposit. It also depends on other factors such as order quantity.

Q: What is the payment term?

A: T/T 30% as deposit, and 70% before delivery. We'll show you the photos of the products and packages before you pay the balance.

Q: What is your terms of delivery?

A: EXW, FOB

Q: Are samples available?

A: Yes, We can supply the sample if we have ready parts in stock, but the customers have to pay the sample cost and the courier cost.

Q: What is the minimum order quantity?

A: Generally, MOQ is 10sets.

Q: Can I make my own brand and designed products?

A: Yes, we do both OEM and ODM, so you can make your own product with your own logo.

Q: Where is your factory? Can I visit it?

A: Our factory located in Nanjing, Welcome to visit our factory. We can arrange pick-up from the airport or train station for you.

Q: What parameters do I need to provide for an accurate quotation?

- 1) Quantity(set)
- 2) Size: Length\*Width\*Height (mm) or samples or technical drawings
- 3) Load capacity per layer(kg)
- 4) Number of layers

Q: What is the material being used for your products?

A: Mild steel Q235.

Q: I don't have drawing or picture available for the products, could you design it for me?

A: Yes, we can make the best suitable design for you but need to know more details.

Q: Do I get any guarantee from your company?

A: 3~10 years warranty

Q: How do you make our business long-term and good relationship?

A: Quality makes trust and reputation, plus competitive price to ensure our customers benefit ;

## More Choice





**Jiangsu Qifei Intelligent Storage Equipment Co., Ltd.**



+86-15161451461



sharonyan@qifeirack.com



warehouse-rackings.com

Add: #739 Dixiu Road Jiangning District Nanjing China