



Q235 Steel Warehouse Racking Stackers Crane With Automated ASRS System

Our Product Introduction

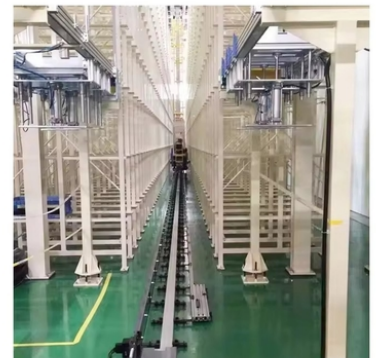
for more products please visit us on warehouse-rackings.com

Basic Information

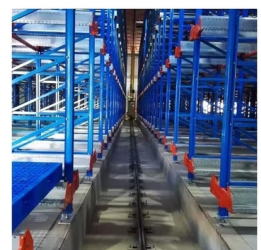
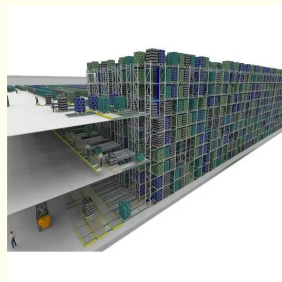
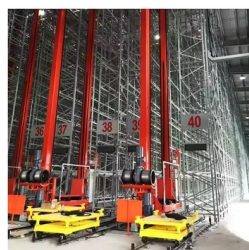


Product Specification

- Model NO.: QF-ASRS
- Material: Steel
- Structure: Rack
- Type: Multi-Level Racking
- Mobility: Fixed
- Height: >15m
- Closed: Open
- Development: Conventional
- Serviceability: Common Use
- Color: Customized
- Lead Time: 25 Days
- Raw Material: Q235
- Surface Treatment: Powder Coating
- Transport Package: Standard Export
- Specification: 500-2000 Square Meter



More Images



Product Description

Conventional Development Warehouse Racking Stacker Crane With Automated ASRS System

---QiFei---Your Best Choice For Warehouse Storage



Product Description

Crane Racking/(AS/RS)

Crane Racking, also known as automated storage/retrieval systems (AS/RS), is a fully automated storage system, ideal for storing pallets and large items. Designed to work within very narrow aisles and at a height of more than 30 metres, crane racking is an efficient, optimised storage solution. Guided by a management software system, the crane travels along the aisles of the warehouse, where it enters, positions and extracts the goods.

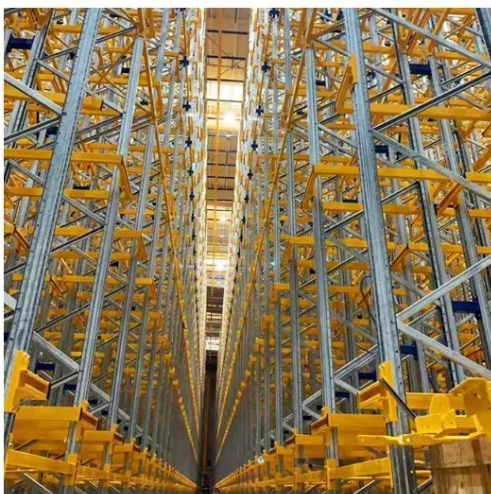
For multi-deep configurations, crane racking is equipped with a shuttle which retrieves the pallet and delivers it directly to the front - ensuring maximum accessibility.

Crane Racking is designed to offer complete flexibility, from load capacity and building height, to cycle times and temperature control. The system adapts easily to the needs of each warehouse making it a highly effective storage solution for a vast range of applications.

Required information for quote

- 1, The AUTOCAD drawing or draft drawing of warehouse or racking.
- 2, Length, Height, and Width of the warehouse.
- 3, Layers of the racking
- 4, Pallet size.
- 5, Max weight of pallet with cargo on.
- 6, Color requirement.

Detailed Photos



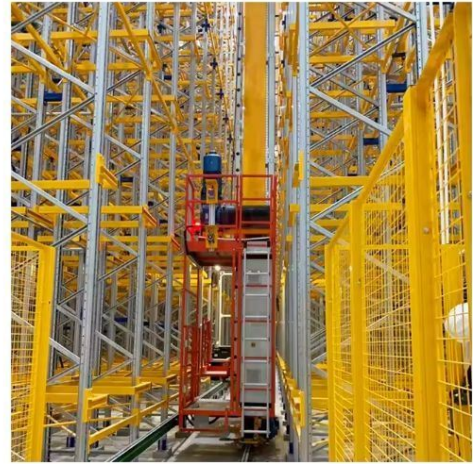
ASRS RACKING SYSTEM (SINGLE-DEEP & DOUBLE-DEEP)

Automated Storage for Pallets & Large Loads with
Stacker Crane AS/RS Systems

- Single-deep - One pallet or load is stored in each storage position in the racking.
- Double-deep - Two loads or pallets are stored in each storage position in the racking, one behind the other to increase storage density.

Product specifications

1. Fully automatic, fast and safe
2. High throughput speed - dramatically reduces picking times
3. Maximum height utilisation - ensures all available space is fully optimised
4. Stock management system controls and updates the goods inventory - ensuring precise control of goods and eliminating manual operating errors
5. Easily adapts to special working conditions - from freezing temperatures (-30 °C) to extreme humidity
6. 30+ metres height



How They Work

Automated Storage and Retrieval Systems (ASRS) typically consist of

- a **rack structure**,
- stacker cranes**,
- system control software (such as WCS)**,
- a **conveyor or AGV interface**

for load transportation to and from the ASRS. The most common type of unit load ASRS employs **narrow, fixed-width aisles**.

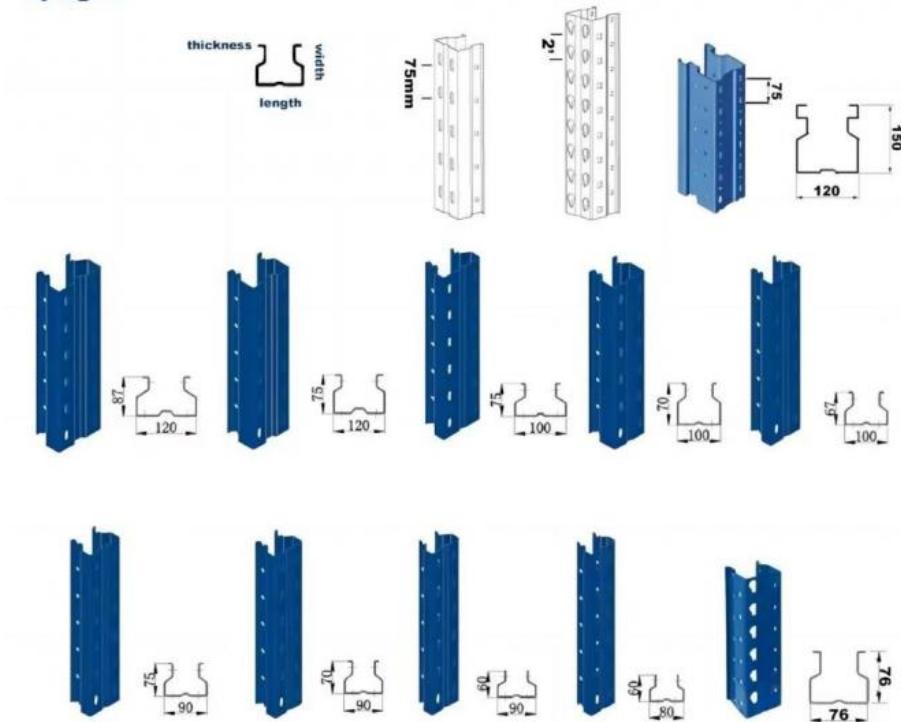
These systems are designed to automatically move pallets or large loads in and out of storage locations. The crane moves along the storage racks, traversing the aisle vertically, while a load-handling device or carriage moves up and down the crane's tall mast to reach the appropriate shelf height.

When the designated storage location is reached, the load handling device on the crane utilizes a mechanism to either pick up or deposit the load, depending on the task at hand. For deep lane storage, shuttles can be utilized alongside cranes to travel into the storage aisle, facilitating the pickup or deposit of loads and enabling even denser multi-deep pallet storage.

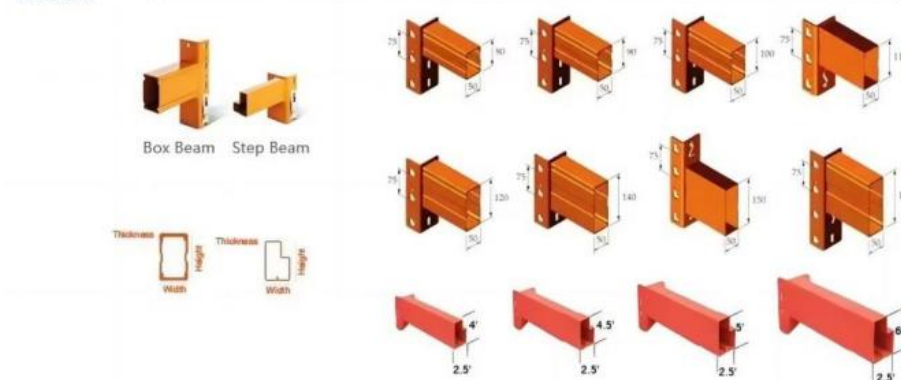
Subsequently, the crane returns to the end of the aisle, where the load is deposited for further processing or a new load is picked up.



Upright



Beam



Baseplate



Foot guard



Color choices



Holes types



Packaging & Shipping

PACKAGE



Package for Upright Frame



Package for Beam



Loading for Beam



Loading for Upright Frame



Loading for Wire Mesh Cage

SHIPMENT



MOT AS YOUR REQUEST



AIR FREIGHT FOR URGENT
Transit time: 5-7 days



OCEAN SHIPPING NORMALLY
Transit time: 15-40 days

Company Profile

Jiangsu Qifei Intelligent Storage Equipment Co., Ltd., established in 2020, is one of the leading manufacturer which specialized in designing & manufacturing industrial warehouse storage racks, automation warehouse system and professional logistics equipment, we aim to provide cost-effective and space utilization storage solutions for all customers worldwide . We have powerful R&D teams, including 8 experienced design engineers.

Qifei's workshop equipped with 6 automatic production lines of rolling and curved steel and two static powder coating lines, which ensures the high quality of our products. All our products and operation are ISO:9001 certified , and all our racks / shelving are approved by SGS company .

Our main products are heavy duty rack, medium duty rack, light duty rack, cantilever rack, mezzanine floor, drive in rack, and so on.

Welcome to visit our company.



FAQ

Q: Are you manufacturer or trading company?

A: We are experienced manufacturer in the warehouse storage industry.

Q: How is your delivery time?

A: Generally, it is within 25 days against formal order and deposit. It also depends on other factors such as order quantity.

Q: What is the payment term?

A: T/T 30% as deposit, and 70% before delivery. We'll show you the photos of the products and packages before you pay the balance.

Q: What is your terms of delivery?

A: EXW, FOB

Q: Are samples available?

A: Yes, We can supply the sample if we have ready parts in stock, but the customers have to pay the sample cost and the courier cost.

Q: What is the minimum order quantity?

A: Generally, MOQ is 10sets.

Q: Can I make my own brand and designed products?

A: Yes, we do both OEM and ODM, so you can make your own product with your own logo.

Q: Where is your factory? Can I visit it?

A: Our factory located in Nanjing, Welcome to visit our factory. We can arrange pick-up from the airport or train station for you.

Q: What parameters do I need to provide for an accurate quotation?

- 1) Quantity(set)
- 2) Size: Length*Width*Height (mm) or samples or technical drawings
- 3) Load capacity per layer(kg)
- 4) Number of layers

Q: What is the material being used for your products?

A: Mild steel Q235.

Q: I don't have drawing or picture available for the products, could you design it for me?

A: Yes, we can make the best suitable design for you but need to know more details.

Q: Do I get any guarantee from your company?

A: 3~10 years warranty

Q: How do you make our business long-term and good relationship?

A: Quality makes trust and reputation, plus competitive price to ensure our customers benefit ;



Jiangsu Qifei Intelligent Storage Equipment Co., Ltd.



+86-15161451461



sharonyan@qifeirack.com



warehouse-rackings.com

Add: #739 Dixiu Road Jiangning District Nanjing China