



## Heavy Duty Industrial Racking Systems Steel Pallet Rack 1000-4000kg Weight Capacity

### Our Product Introduction

For more products please visit us on [warehouse-rackings.com](http://warehouse-rackings.com)

#### Basic Information

- Place of Origin: China
- Brand Name: Qifei
- Certification: ISO9001 CE SGS
- Model Number: Double Deep Racking
- Minimum Order Quantity: 10
- Price: 50
- Packaging Details: Standard Export
- Delivery Time: 20 days after deposit
- Payment Terms: 30% deposit, 70% before delivery
- Supply Ability: 8000ton/year

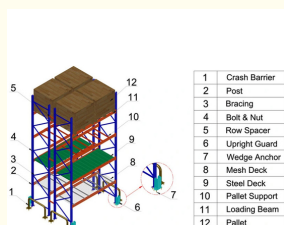


#### Product Specification

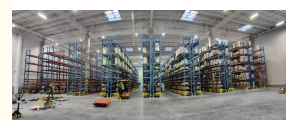
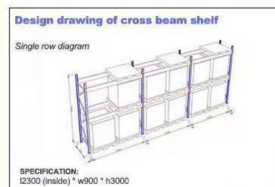
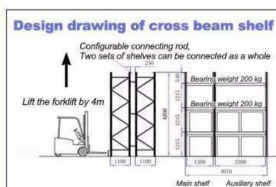
- Weight Capacity: 1000-4000kg/ Layer, 6000-21000kg/ Bay
- Guarantee: 3 Years
- Colors: Customized
- Port: NANJING/SHANGHAI PORT
- Usage: Warehouse Storage
- Surface Treatment: Powder Coating
- Hs Code: 73089000
- Highlight: powder coating warehouse racking heavy duty , powder coating heavy duty industrial racking systems



#### More Images



1	Crash Barrier
2	Post
3	Bracing
4	Bolt & Nut
5	Row Spacer
6	Upright Guard
7	Wedge Anchor
8	Mesh Deck
9	Steel Deck
10	Pallet Support
11	Loading Beam
12	Pallet



## Product Description

### Heavy Duty Industrial Racking Systems Steel Pallet Rack 1000-4000kg Weight Capacity

#### Product Description:

With a weight capacity of 1000-4000kg per layer and 6000-21000kg per bay, this Double Deep Selective Pallet Rack is perfect for storing heavy items such as machinery, equipment, and bulk products.

Our Double Deep Pallet Racking System is designed to make the most of your warehouse space, allowing you to store more products in less space. The double deep design means that you can store pallets two deep, which effectively doubles your storage capacity. This is perfect for warehouses that have limited space but a high volume of inventory to store.

Our Heavy Duty Double Deep Racking is also treated with a powder coating surface treatment to ensure that it is resistant to corrosion and rust. This means that your racking system will last longer and continue to look great even after years of use.

#### Applications:

Overall, our Heavy Duty Double Deep Racking is the perfect solution for any warehouse that needs to maximize storage space while still providing easy access to products. Its high weight capacity, double deep design, and powder coating surface treatment make it a durable and reliable choice for any warehouse storage needs.

#### Parameters:

<b>Style</b>	Warehouse Storage Pallet Rack
<b>Selection</b>	Double-deep
<b>Dimension</b>	Standard Pallet:1200*800 / 1200*1000 1100*1100 / 1066*1220 Depth:1000MM / 900MM / 1020MM Width: 2700MM / 2300MM / 2500MM / 2432MM Height::pitch is adjusted by increments of 75mm Customized Pallet:contact us directly
<b>Upright</b>	80*60; 90*60; 90*70; 90*75; 100*67; 100*70; 100*75; 120*75; 120*87mm, Thickness:1.5~3.0mm
<b>Beam</b>	Height:80~160mm; Width:45mm/50mm; Thickness:1.5~2.5mm
<b>Bearing Capacity</b>	5000KG per level max ; 1500KG per pallet max
<b>Material</b>	Q235B
<b>OEM&amp;ODM</b>	Available
<b>Surface Treatment</b>	Galvanized/Powder Coating
<b>Color</b>	Customized
<b>Sample</b>	Available
<b>General Use</b>	Warehouse Shelving/Rack, etc.

#### Packing and Shipping:

##### Packaging:

The Double Deep Pallet Racking product is carefully packaged to ensure safe delivery.

The uprights and beams are wrapped in protective foam and then securely strapped together.

The pallet racking components are then placed on a sturdy wooden pallet and shrink-wrapped to prevent movement during transportation.



Shipping:



**EXPRESS**

Express door to door is the most convenient one, 5-7days will arrive



**Jiangsu Qifei Intelligent Storage Equipment Co., Ltd.**



+86-15161451461



sharonyan@qifeirack.com



warehouse-rackings.com

Add: #739 Dixiu Road Jiangning District Nanjing China