



Double Deep Warehouse Storage System Double Deep Storage Solution with 1000-4000kg Weight Capacity

Our Product Introduction

For more products please visit us on warehouse-rackings.com

Basic Information

- Place of Origin: China
- Brand Name: Qifei
- Certification: ISO9001 CE SGS
- Model Number: Double Deep Racking
- Minimum Order Quantity: 10
- Price: 50
- Packaging Details: Standard Export
- Delivery Time: 20 days after deposit
- Payment Terms: 30% deposit, 70% before delivery
- Supply Ability: 8000ton/year

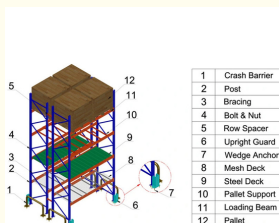


Product Specification

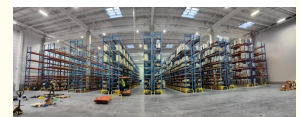
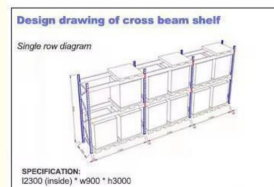
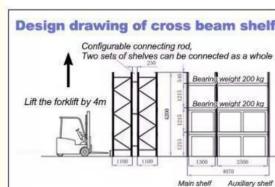
- Port: NANJING/SHANGHAI PORT
- Weight Capacity: 1000-4000kg/ Layer, 6000-21000kg/ Bay
- Usage: Warehouse Storage
- Hs Code: 73089000
- Guarantee: 3 Years
- Surface Treatment: Powder Coating
- Colors: Customized
- Highlight: powder coating selective pallet racking , powder coating heavy duty pallet racking



More Images



1	Crash Barrier
2	Post
3	Bracing
4	Bolt & Nut
5	Row Spacer
6	Upright Guard
7	Wedge Anchor
8	Mesh Deck
9	Steel Deck
10	Pallet Support
11	Loading Beam
12	Pallet



Product Description

Product Description:

With a weight capacity of 1000-4000kg per layer and 6000-21000kg per bay, this Double Deep Selective Pallet Rack is perfect for storing heavy items such as machinery, equipment, and bulk products.

Our Double Deep Pallet Racking System is designed to make the most of your warehouse space, allowing you to store more products in less space. The double deep design means that you can store pallets two deep, which effectively doubles your storage capacity. This is perfect for warehouses that have limited space but a high volume of inventory to store.

Our Heavy Duty Double Deep Racking is also treated with a powder coating surface treatment to ensure that it is resistant to corrosion and rust. This means that your racking system will last longer and continue to look great even after years of use.

Applications:

Overall, our Heavy Duty Double Deep Racking is the perfect solution for any warehouse that needs to maximize storage space while still providing easy access to products. Its high weight capacity, double deep design, and powder coating surface treatment make it a durable and reliable choice for any warehouse storage needs.

Parameters:

Style	Warehouse Storage Pallet Rack
Selection	Double-deep
Dimension	Standard Pallet:1200*800 / 1200*1000 1100*1100 / 1066*1220 Depth:1000MM / 900MM / 1020MM Width: 2700MM / 2300MM / 2500MM / 2432MM Height: pitch is adjusted by increments of 75mm Customized Pallet:contact us directly
Upright	80*60; 90*60; 90*70; 90*75; 100*67; 100*70; 100*75; 120*75; 120*87mm, Thickness:1.5~3.0mm
Beam	Height:80~160mm; Width:45mm/50mm; Thickness:1.5~2.5mm
Bearing Capacity	5000KG per level max ; 1500KG per pallet max
Material	Q235B
OEM&ODM	Available
Surface Treatment	Galvanized/Powder Coating
Color	Customized
Sample	Available
General Use	Warehouse Shelving/Rack, etc.

Packing and Shipping:

Packaging:

The Double Deep Pallet Racking product is carefully packaged to ensure safe delivery.

The uprights and beams are wrapped in protective foam and then securely strapped together. The pallet racking components are then placed on a sturdy wooden pallet and shrink-wrapped to prevent movement during transportation.



Shipping:



EXPRESS

Express door to door is the most convenient one, 5-7days will arrive



Jiangsu Qifei Intelligent Storage Equipment Co., Ltd.



+86-15161451461



sharonyan@qifeirack.com



warehouse-rackings.com

Add: #739 Dixiu Road Jiangning District Nanjing China